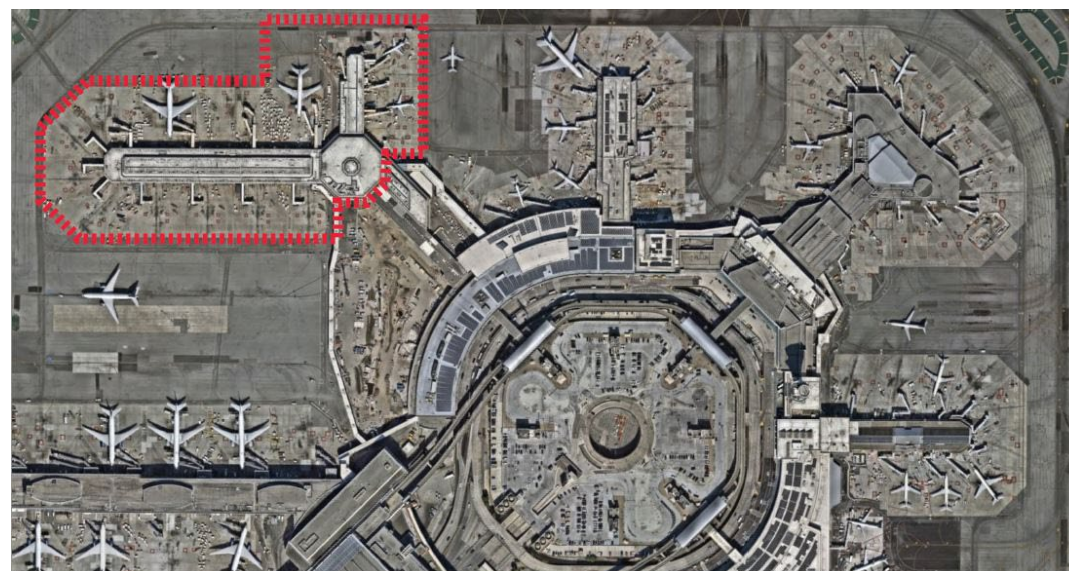


Boarding Area F (BAF) Refresh – Issued, Pre-Award

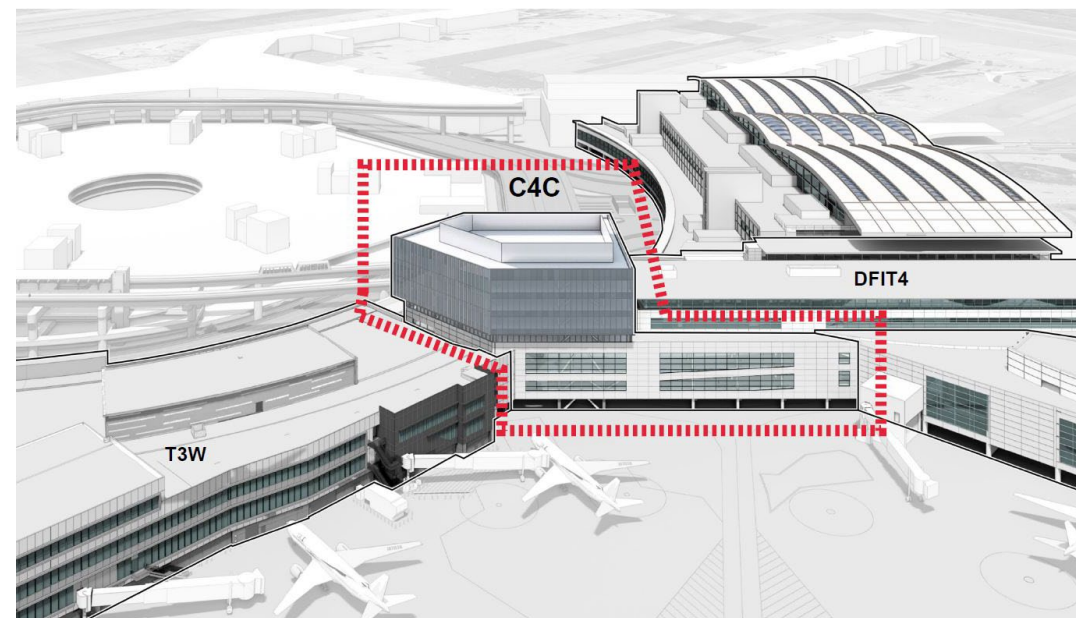
- Refresh the interior of BAF to address operational and passenger experience deficiencies.
- Scope may include renovation of holdrooms, restrooms, concessions, flooring, ceilings, lighting, seating, wayfinding, and amenities.
- Replace select aging Passenger Boarding Bridges (PBB) and aircraft systems to support narrow and wide body operations.
- Maintain live operations and minimal gate closures throughout project.



Boarding Area F Refresh primary project scope area (in red)

Airport Tenant Relocations (formerly Courtyard 4 Connector Interior Buildout)

- Interior buildout of select floors within the Courtyard 4 Connector (C4C) Building.
- Buildout may include offices, breakrooms, restrooms, public spaces, building systems, IT and security systems.
- Contract may include tenant relocation services.
- Interior buildout may include associated temporary and/or long-term shell space development and buildouts within Dianne Feinstein International Terminal 4 (DFIT-4) for both tenant or airport staff spaces.

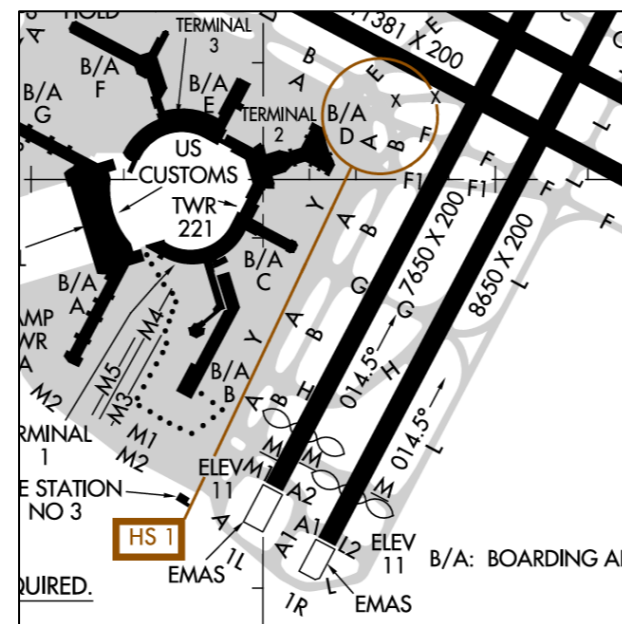
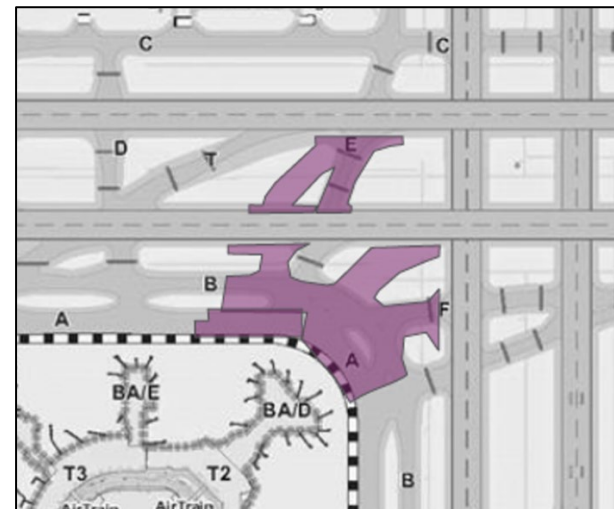


Courtyard 4 Connector (C4C)

Taxiways E & J Realignment

The Project scope includes the following:

- Asphalt Concrete Pavement Rehabilitation
- Replacement of Airfield Lighting and Signage
- Refreshing Pavement Markings
- Drainage Improvements



ASIP Phase 2 – CCTV Improvements

- This Project will perform field assessment, design, and install new cameras throughout the Airport campus within Terminal Buildings, the International Terminal, Terminal Garages, AirTrain Station Platforms and outlying buildings.



Superbay Hangar Renovation

Scope includes renovation and major repairs, such as:

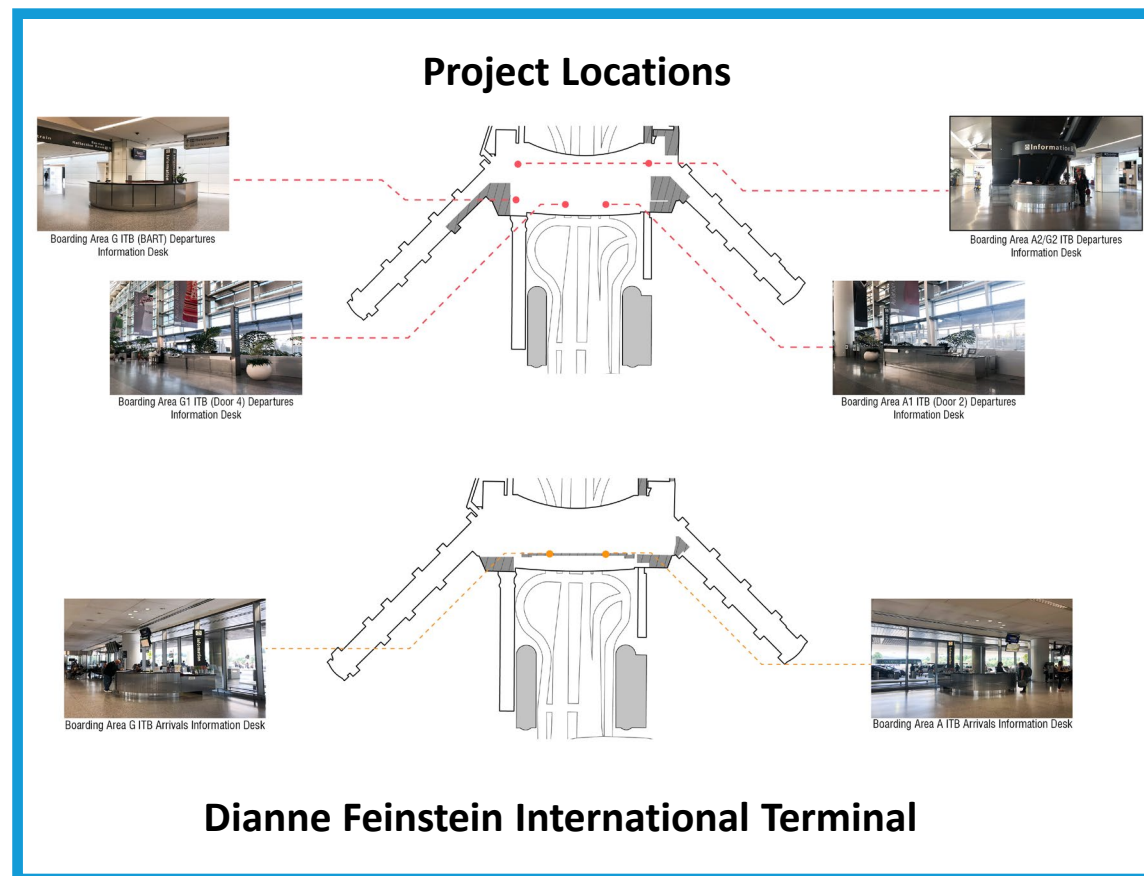
- Replace roofing, fall protection system, exterior wall siding panels, passenger elevator
- Upgrade fire alarm system
- Install new photovoltaic (PV solar) system



Superbay Hangar

ITB Information Desk Improvements

- Replace 7 Information Desks at Dianne Feinstein International Terminal
- New desks will:
 - Include design enhancements and upgraded amenities
 - Ensure compliance with current codes
 - Enhance passenger and guest experience



ROM: \$2.4M

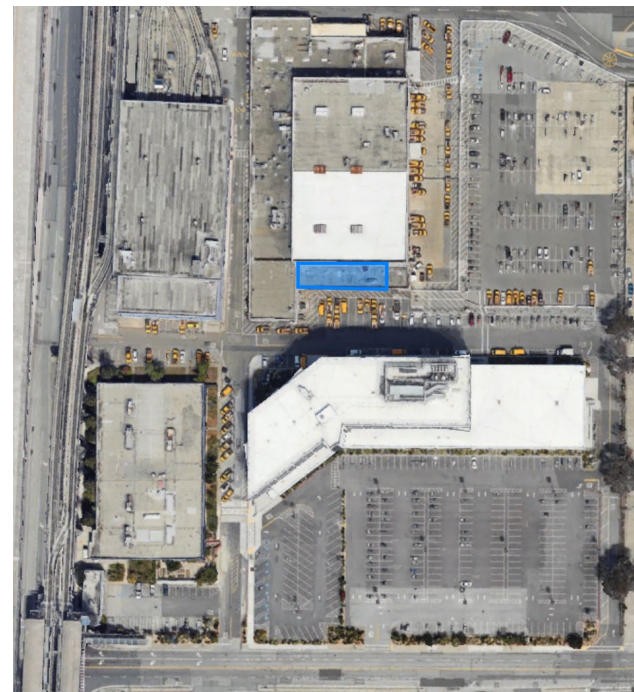
Estimated Bid Date: Q4 2025



West Campus Fitness Center

- Provides a fitness center for the West Campus area to promote wellness of Commission employees located in the area.
- Scope will include:
 - Interior Partitions
 - Ceilings
 - Interior Finishes and Casework
 - Mechanical, Electrical and Plumbing System Upgrades

Project Location



Building 682 – 5th South Side

ROM: \$2.5M

Estimated Bid Date: Q3 2026



Roadway Pedestrian Safety Improvements

- Improve pedestrian route to roadway island at T3 to meet ADA and replace bus shelters.
- Scope will include:
 - Reconfiguration of crosswalks
 - Upgrade of roadway island ramps and surface to meet ADA
 - Replacement of bus shelters

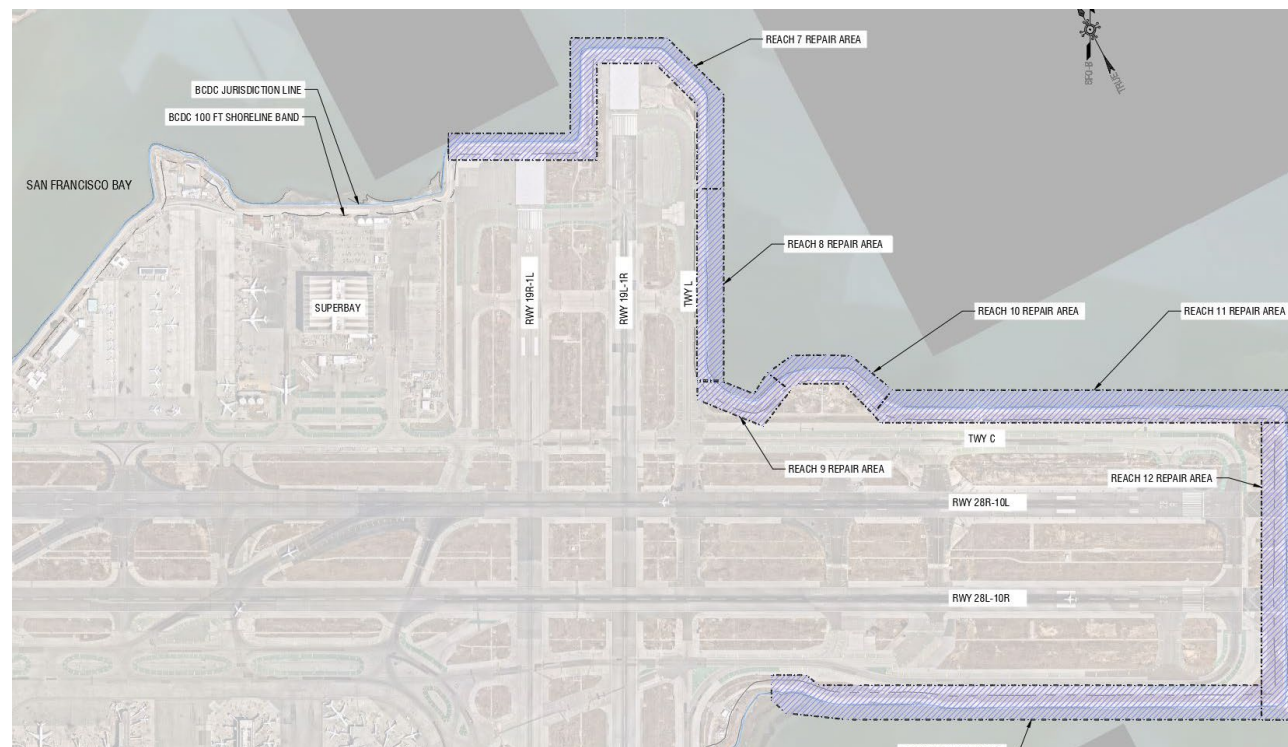
Project Location



Terminal 3 – Roadway Island

Airport Shoreline Rehabilitation

- Project will maintain Airport Shoreline Reaches 7-13 by repairing seawall cracks, wall joints, and vinyl sheet piles, replenishing riprap, and removing debris and vegetation
- Proposed repairs will increase the Airport Shoreline Protection system's resilience and restore its functionality



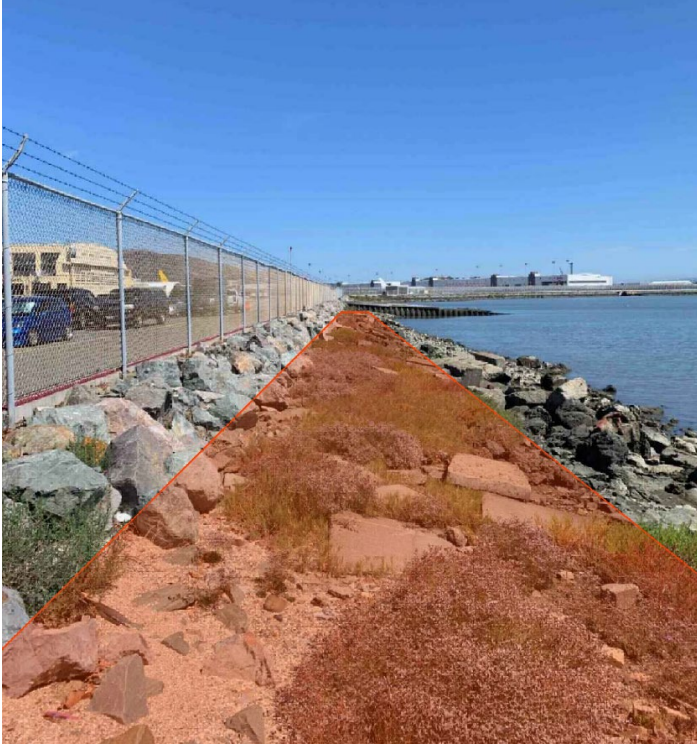
Location Map of Proposed Airport Shoreline Repairs from Reach 7 to 13

ROM: \$4.5M

Estimated Bid Date: Q4 2025



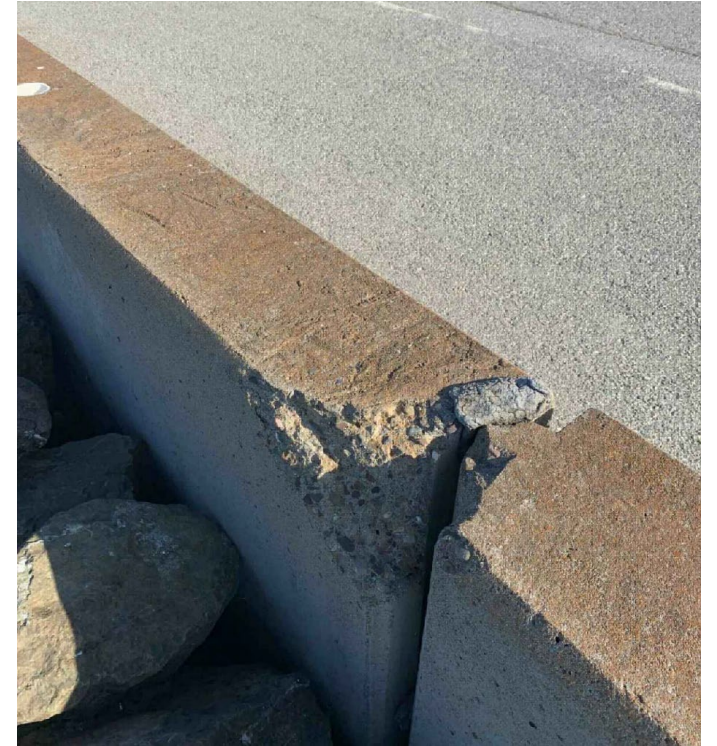
Airport Shoreline Rehabilitation



Existing Eroded Riprap and Vegetation/Debris



Existing Wale and Backboard Damage



Existing Concrete Seawall Damage

ROM: \$4.5M

Estimated Bid Date: Q2 2025



SCADA System Improvements Phase 1

- Demolition of existing SCADA panels and associated equipment
- Installation of new SCADA panels with integration to the existing SCADA system at Mel Leong Treatment Plant
- Upgrading level sensing equipment monitoring the wet wells at the pump stations
- Upgrade the communications of the pump stations to Mel Leong Treatment Plant either through radio and antenna or hard-wired connection



Storm Drain Pump Station 17 is 1 of 13 pump stations in scope for this project.

New Water Mains – East Field

- Replace piping between US Coast Guard and Superbay with a new water line loop along North Access Road to supply existing potable and fire water services
- Install new pipe lateral connections to existing services and fire hydrants in the East Field
- Install flow meters for SCADA monitoring
- Abandon-in-place existing AOA water mains and relevant laterals



Sample water line installation from Contract 10010 (2021).

Stations BB, AR, and AM 12kV Upgrades

- This project will upgrade 12kV underground electrical cables within new and existing duct banks from various 12kV electrical stations (Stations BB, AR, and AM) to meet increased demand and improve reliability, safety and system efficiency. The new infrastructure will support increased demand from Signature, Superbay, Plot 40/41 facilities, Police Shooting Range, Firehouse #2, Airfield Ops facilities, and new Recycled Water System facility and FBO VIP terminal all located at the Airport's North Field Area. Work will take place in both Landside and Airside Operation Areas.



Underground 12kV duct bank routes between Stations and a Facility

CT11431-RWSP
12KV SUBSTATION
12KV (E) DUCTBANK
12KV (N) DUCTBANK

Building Energy & Electrification Program (BEEP) – Phase 1

- Implement Energy Efficiency Measures (EEMs) from the Energy Benchmarking Study / ZNE at SFO Report.
- Replace aging natural gas equipment with new efficient electric equipment per SFO Electrification Action Plan.
- Provide PV per Distributed Energy Response Program.



Typical Rooftop Gas Fired/Electric Packaged AC Unit to be replaced with New Packaged Heat Pump

HVAC Replacement at Special System Rooms (SSRs)

- Due to aging infrastructure, existing SSRs are experiencing high room temperatures which can lead to ITT down time and increase service calls for both ITT and Facilities Maintenance.
- SSR rooms are critical to all data and communication for SFO and Tenants.
- The rooms selected for this project have been identified by Mechanical Maintenance and ITT's as high risk of HVAC failure.
- Identified locations have already experience failures and will continue to do so if not addressed.



Typical Outdoor Condensing Unit

Water Main Monitoring & Leak Detection Phase 2

- Install flow sensors
- Install pressure sensors, temperature sensors, and hydrophone sensors
- Connect sensor data to SFO Data Storage, allowing the data to be incorporated in monitoring interfaces
- Contextualize this data in a way that the user can understand the current state of the system and quickly access the information required for effective operational, planning and design decision making.



Flow Sensor Installed in Vault

Bridge Deck Resurfacing

- Resurface I-380 Northbound Viaduct On-Ramp (35C180K) (0.25 mi. in length) with approximately 3,569 s.f. of resurfacing treatment needed
- Resurface International Return Loop at North McDonnell Road (35C0196) (0.34 mi. in length) with approximately 85,573 s.f. of resurfacing treatment needed

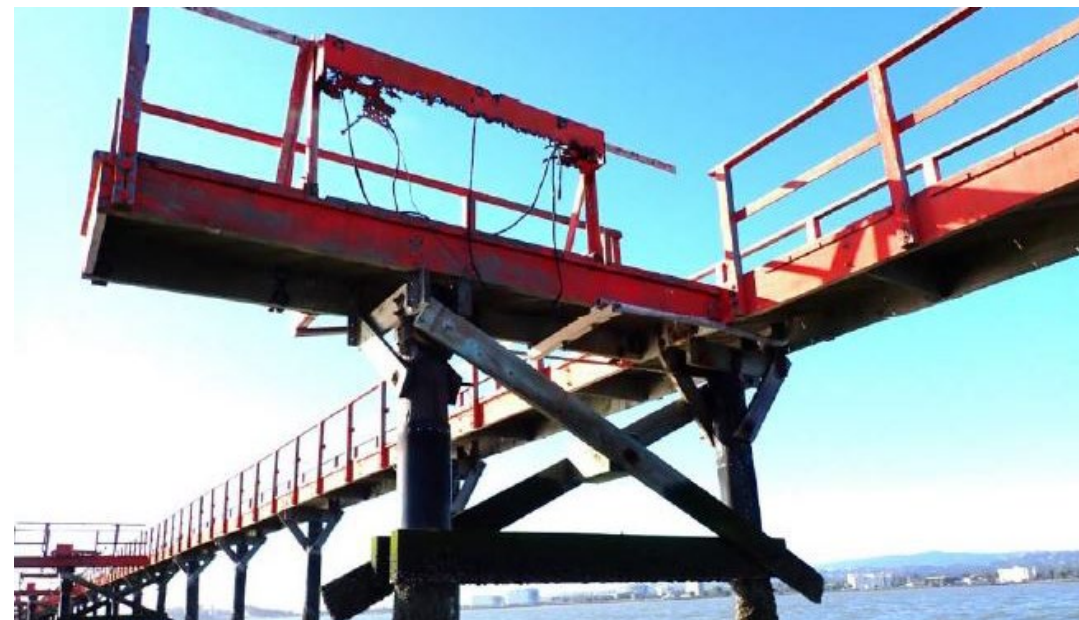


Caltrains Bridge Deck

Runway 19L, 28L & 28R Timber Trestles Improvement

Scope:

- Assess the condition of the trestles supporting FAA lighting on Runways 19L, 28L, and 28R, and 19L Middle Marker
- Repair damaged structural piles and braces supporting trestle walkways
- Repair or install new walkways and guardrails to meet OSHA requirements



Damaged portion of handrail and walkway

AirTrain Medium Voltage Cable Replacement Phase 1

- This project will replace one of the two main 12 kV cables supplying power to the Air Train system. The existing cables are about 25 years old. One of the cables failed recently and caused a system outage. This phase will replace cable 12BAAT-1 from Station “BA” across Highway 101 to air train load centers in Buildings 679, 779, 588, 179 and 197.
- The Air Train power distribution system is fed from the airport’s two main electrical substations (Station BA and Station M). The feeders are 25 years old and have exceeded their expected life as demonstrated by the recent cable failures.



Highlight of 12BAAT-1 12kV path and 12AT-1, and 12AT-2.

Sanitary Waste and Drainage Repairs at BAC

- The proposed project scope will include replacing aging and leaky Sanitary Waste lines at BAC underfloor area. The project will address the periodic flooding, pipe leaks, and mosquito infestations. BAC underfloor structural truss supports are also deteriorating. The project will fill the crawlspace with lightweight concrete to provide additional support.



B/A C Crawlspace

Sanitary Sewage Lift Station 1 and 2

- This project aims to replace the existing lift stations and their respective piping networks that are in the middle of the inner loop road to the landscape buffer zones. Moving these pump stations will allow for Facilities Maintenance to access these stations with minimal vehicular traffic disruption when emergency repairs are required.

