

Workers' Compensation and Liability Annual Summary

Period Collected: June 2019 through March 2021

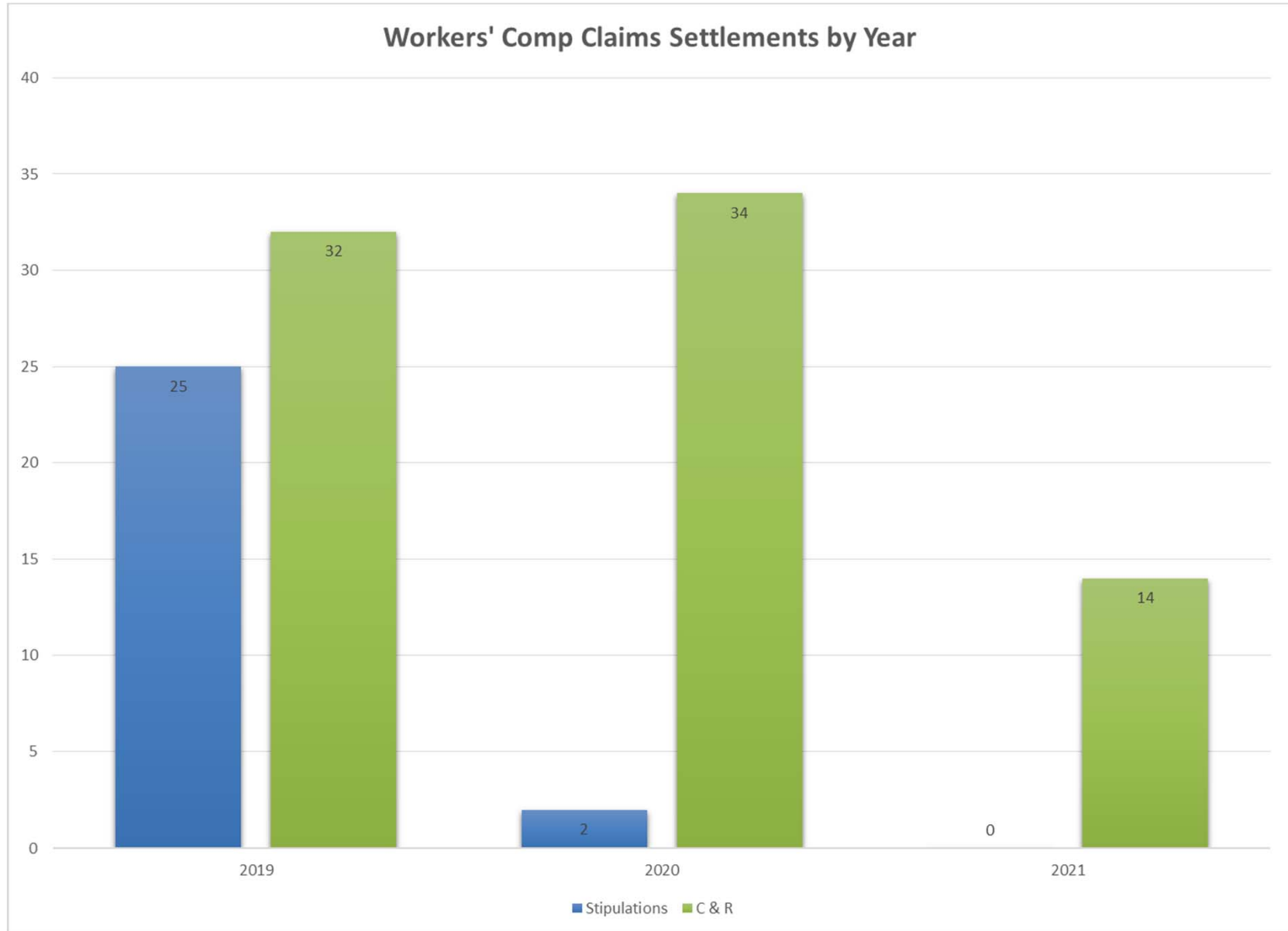
**Golden Gate Bridge, Highway and Transportation District
Finance-Auditing Committee
Meeting of July 22, 2021**



Program Highlights

- Reduction in all lines of claims
- Reduction in life of claims (aged)
- Decreased incurred reserves (WC)
- Decreased number of open claims

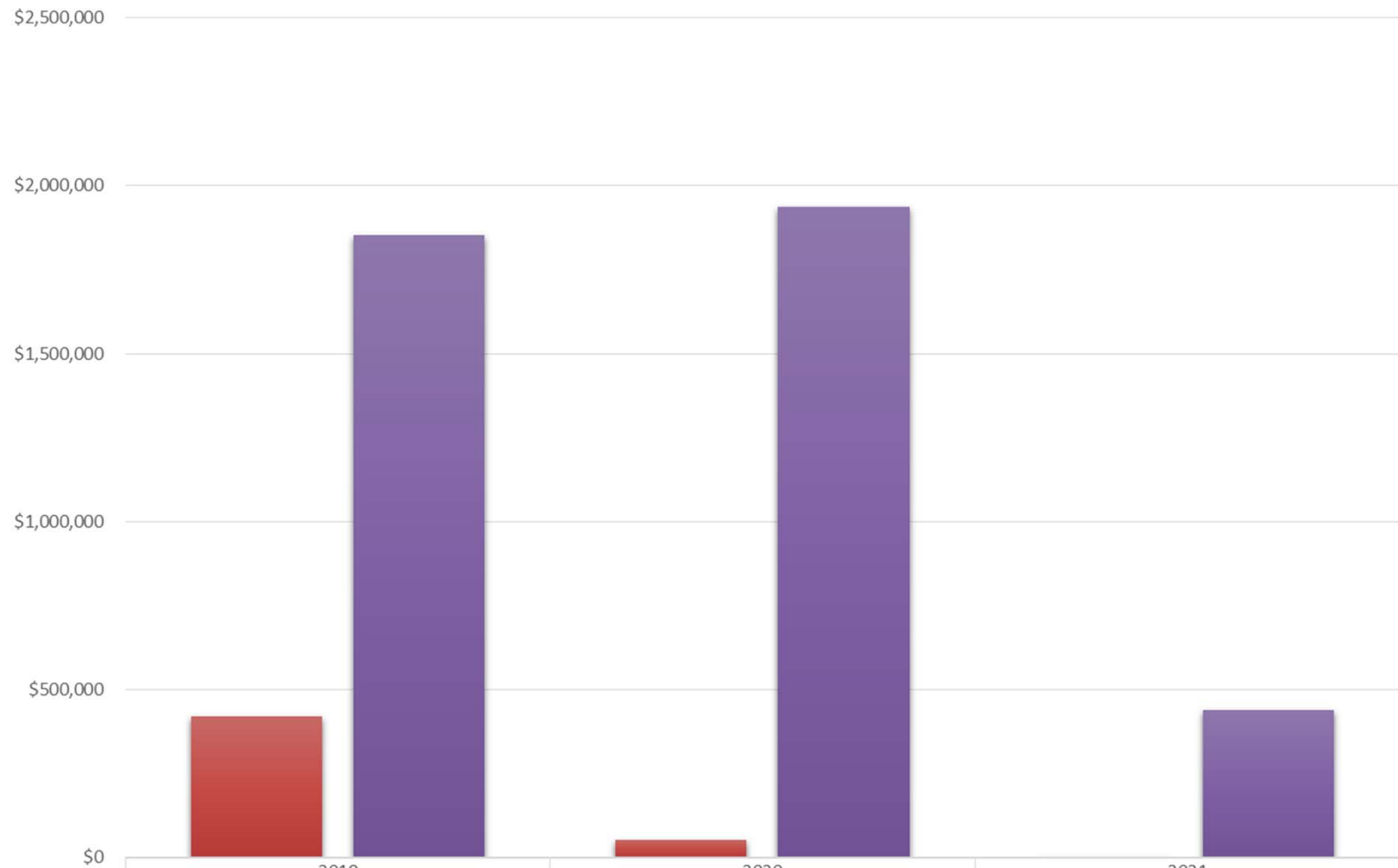




Workers' Compensation Losses at a Glance

	2010	2011	2012	2013	2014	2015	2016	2017	2018	2019	2020	Average
First Aid	28	5	15	2	4	1	0	6	2	0	5	6
Indemnity	78	84	95	95	79	107	81	72	87	85	68	85
Info Only	16	35	22	43	51	56	61	34	30	41	29	38
Medical Only	37	44	45	42	28	36	31	33	43	37	25	36
Total	159	168	177	182	162	200	173	145	162	163	127	165

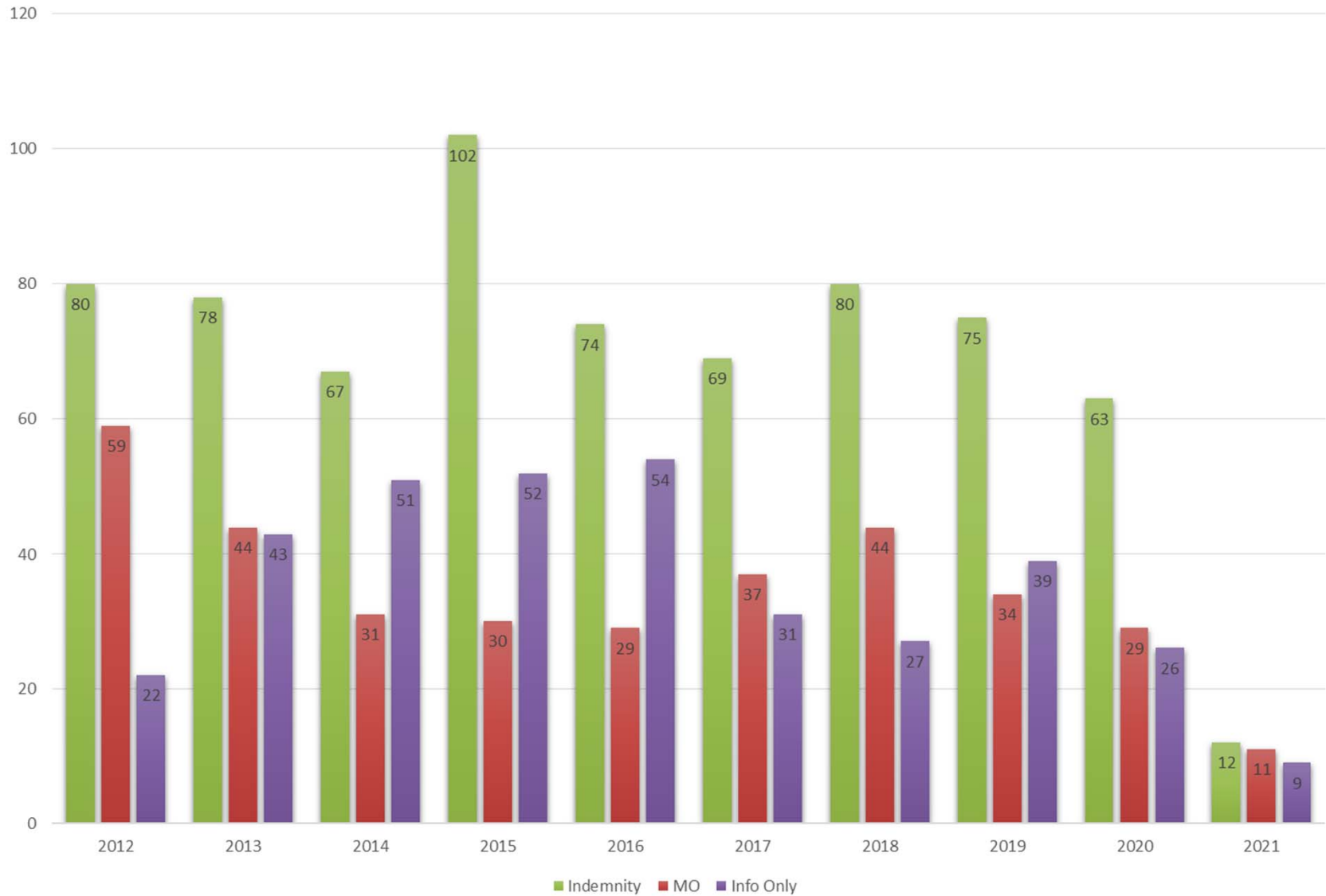
Workers' Comp Claims Settlement Costs by Year



■ Stipulation Cost	\$420,663	\$50,460	0
■ C&R Cost	\$1,852,666	\$1,936,185	\$439,054

■ Stipulation Cost ■ C&R Cost

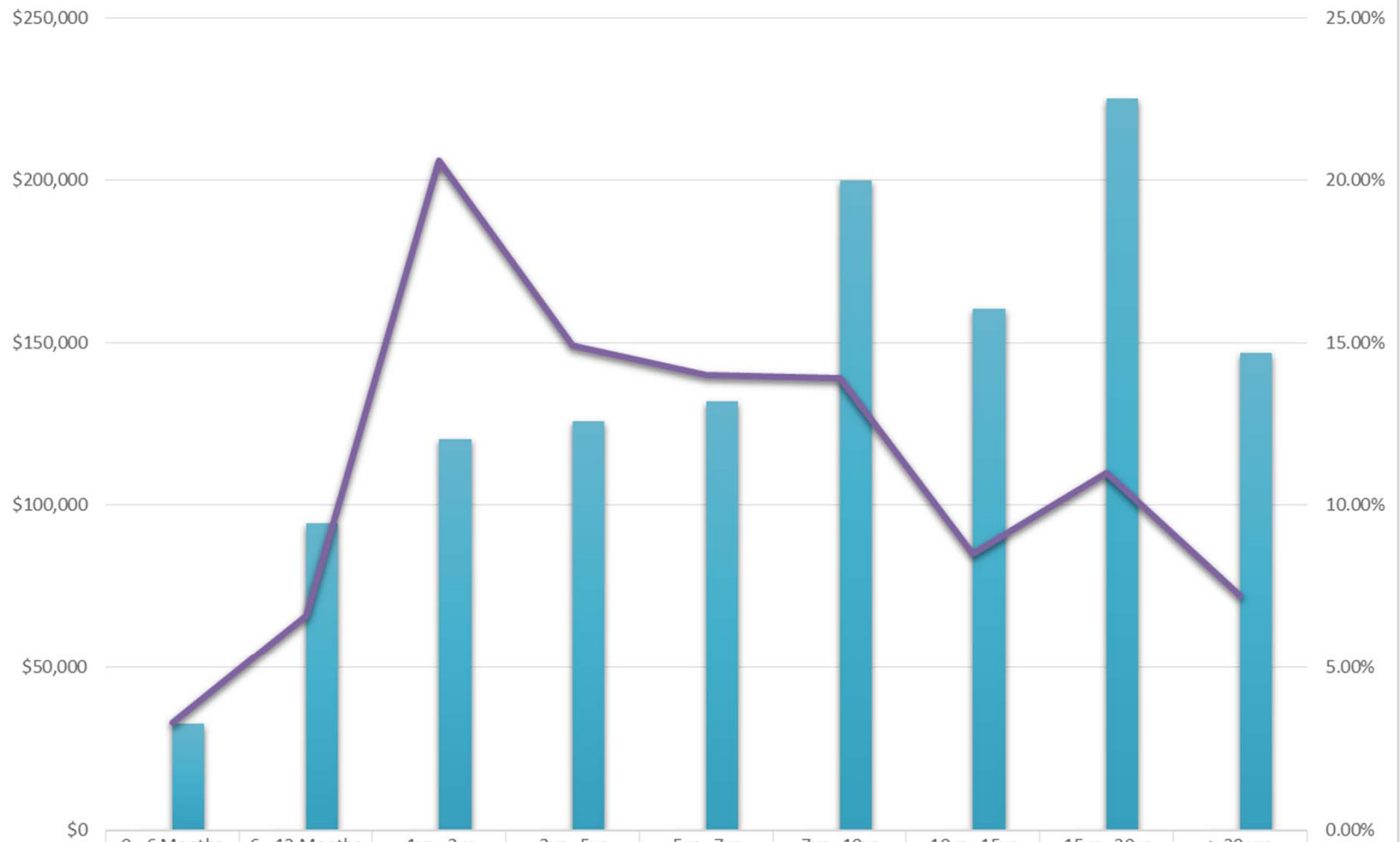
Workers' Comp Calendar Year New Claims



Workers' Comp Open Claim Stratification by Age of Claim - Total



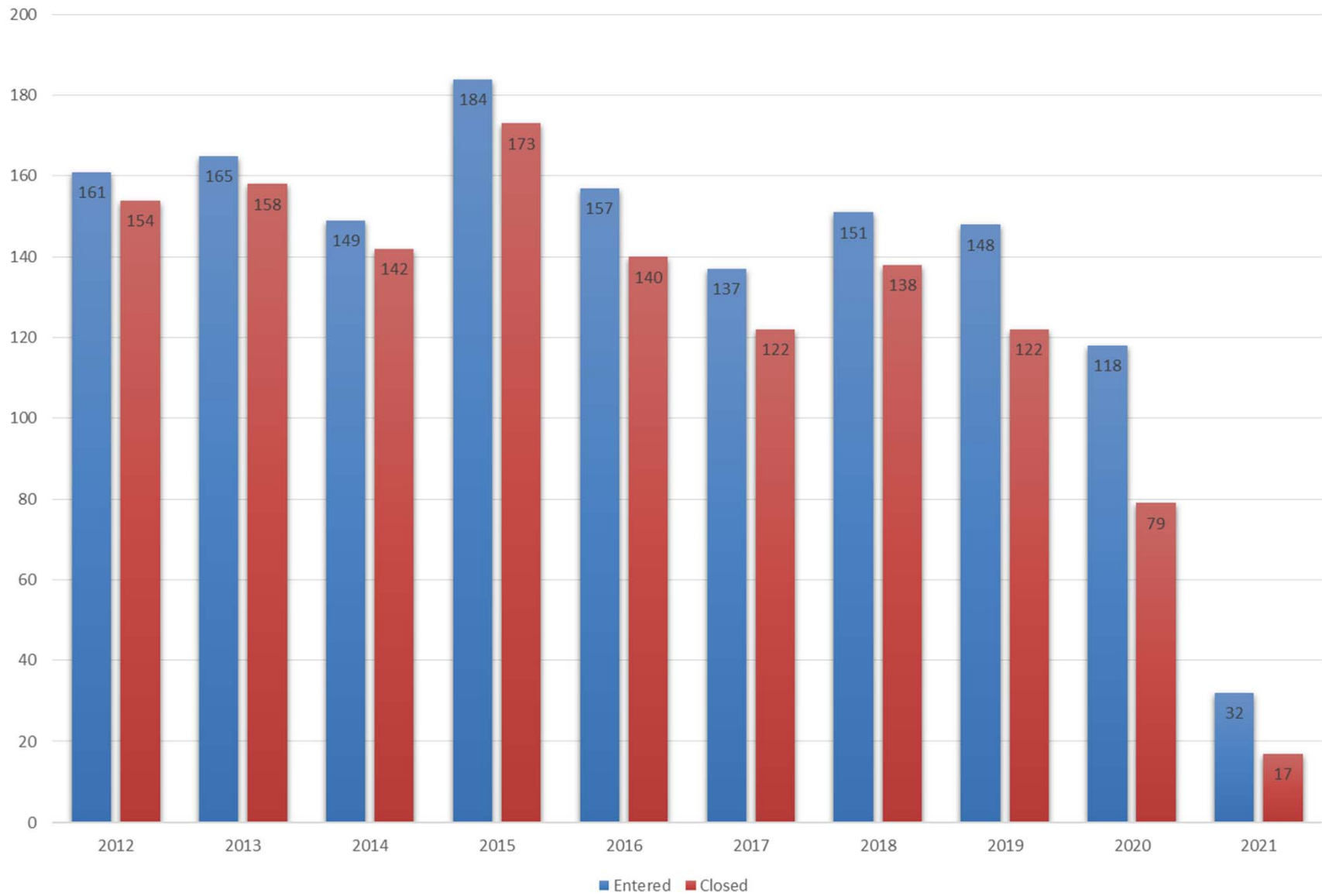
Workers' Comp Open Claim Stratification by Age of Claim - Average



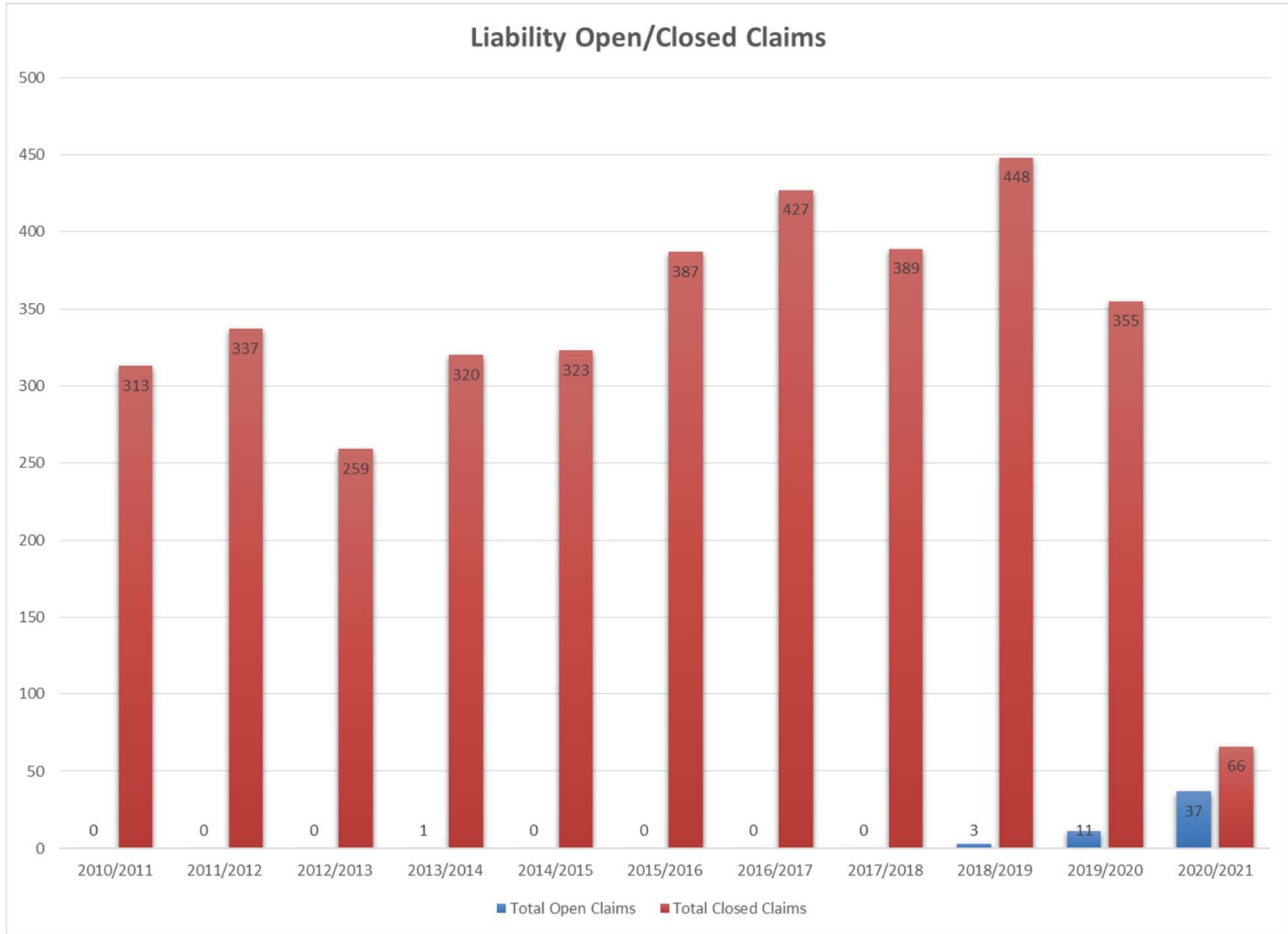
	0 - 6 Months	6 - 12 Months	1yr - 3yr	3yr - 5yr	5yr - 7yr	7yr - 10yr	10yr - 15yr	15yr - 20yr	> 20 yrs
#Claims	25	17	42	29	26	17	13	12	12
Avg. Incurred	\$32,477	\$94,508	\$120,299	\$125,704	\$132,030	\$199,833	\$160,422	\$225,264	\$146,852
(%) of Total	3.30%	6.60%	20.60%	14.90%	14.00%	13.90%	8.50%	11.00%	7.20%

#Claims Avg. Incurred (% of Total)

Workers' Comp Open/Closed Claims



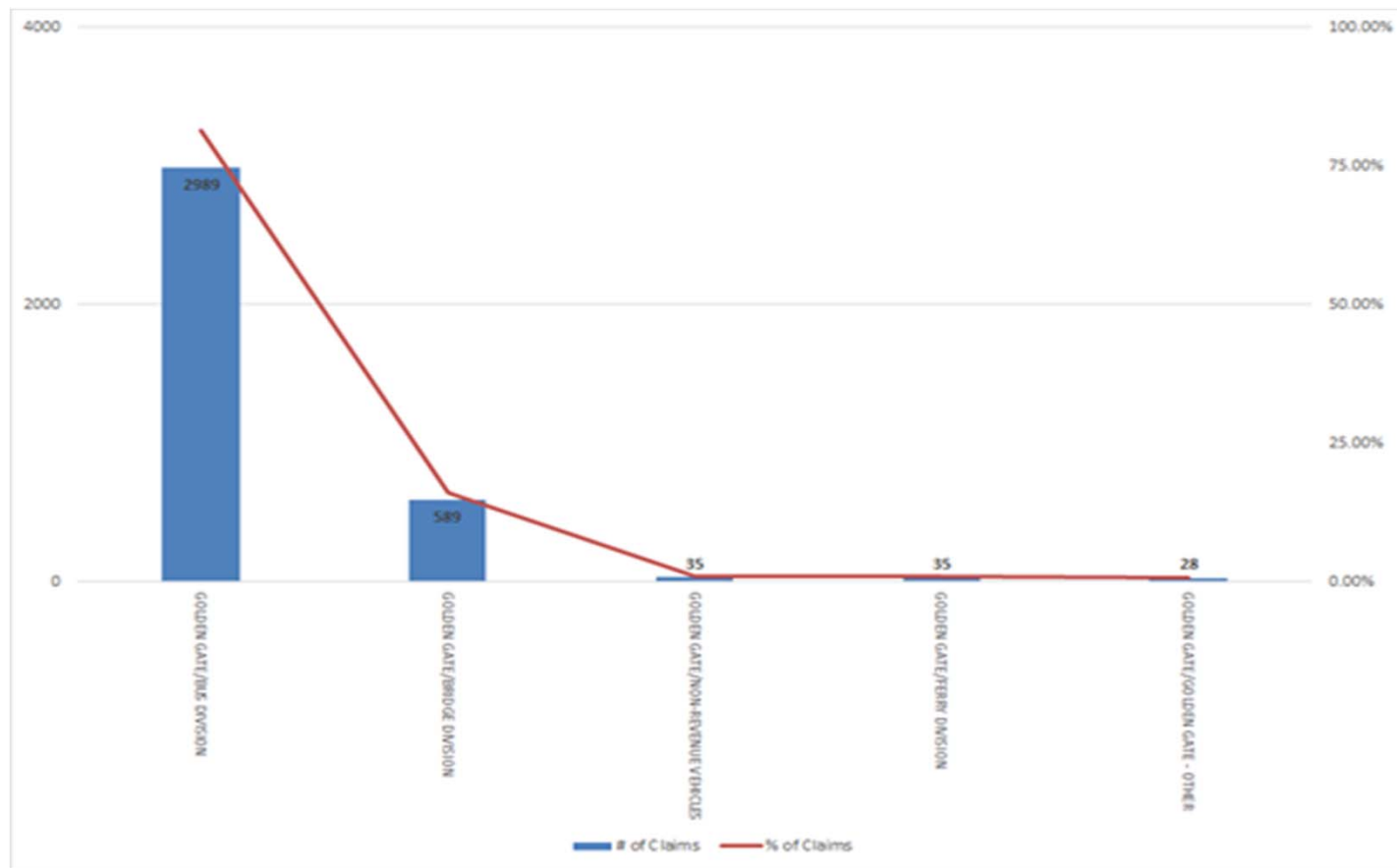
Liability savings	
Outstanding Liabilities 05/31/2019	\$9,368,207
Outstanding Liabilities 03/12/2021	\$8,484,361
Total Reduction from 2019 - Present	\$883,846
- Salvage from C&R Claims	\$607,905



SEVERITY - Fiscal Year Historical Summary



FREQUENCY DIVISION HISTORICAL 10 YEAR SUMMARY



Liability Severity

Division	Indemnity Paid	Litigation Paid	Expense Paid	Total Paid	Total Reserves	Total Incurred
GOLDEN GATE/BUS DIVISION	\$10,522,615	\$1,429,422	\$194,199	\$12,146,237	\$2,098,767	\$14,245,003
GOLDEN GATE/NONREVENUE VEHICLES	\$95,648	\$3,364	\$150	\$99,162	\$50,186	\$149,348
GOLDEN GATE/BRIDGE DIVISION	\$139,756	\$21,104	\$184	\$161,045	\$7,800	\$168,845
GOLDEN GATE/GOLDEN GATE - OTHER	\$40,564	\$4,721	\$0	\$45,285	\$100	\$45,385
GOLDEN GATE/FERRY DIVISION	\$64,255	\$31,124	\$0	\$95,379	\$0	\$95,379
TOTAL	\$10,862,839	\$1,489,735	\$194,533	\$12,547,107	\$2,156,853	\$14,703,960

Questions?

THIS PAGE INTENTIONALLY LEFT BLANK