

- **Recap and Next Steps for  
Wayfinding and Signage/Striping**
- **Ferry Terminals/Ferries**

## **Pedestrian and Bicycle Advisory Committee (PBAC) Meeting**

**September 27, 2023**



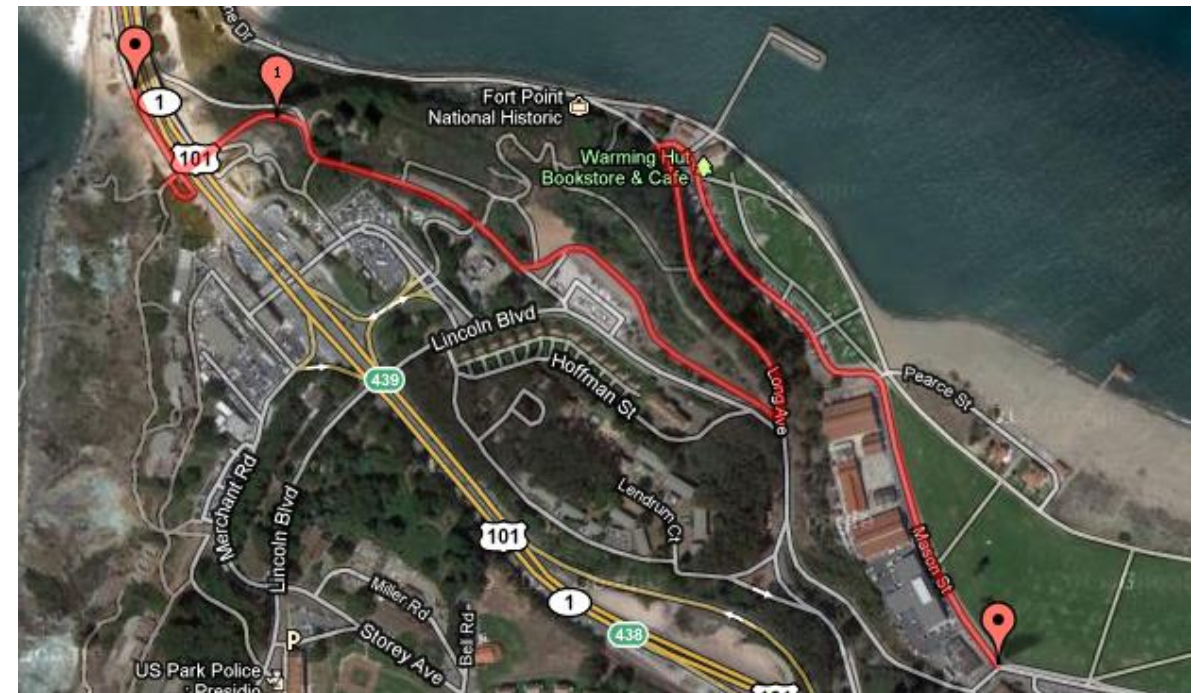
## ➤ **Recap of Wayfinding and Signage/Striping Assessment**

- Consistency and continuity
- Innovative pavement markings
- Maps at key locations
- Different signage for commuters & visitors
- Universal symbols/QR codes
- Emergency response signage
- Simplify signage



## ➤ Recap of Wayfinding and Signage/Striping Assessment

- Regulatory versus informational signage
- Rename north side pavement markings
- Routing of visitors to East Conzelman





## ➤ Wayfinding and Signage/Striping Assessment Next Steps

- Feedback/approval from staff, Board
- Develop preliminary scope of work and budget
- Contact potential GGBHTD partners: Caltrans, GGNRA, City of Sausalito
- Identify lead agency – define study area
- Apply for grant moneys; quantify benefits
- Develop RFP, obtain staff/board approval
- Select design firm/complete contract
- Construct project



## ➤ **Wayfinding and Signage/Striping RFP Potential Scope of Work**

- Public outreach/user surveys/counts of pedestrians and bicyclists
- Field review/existing conditions
- Mapping of user routes
- Preliminary sign graphics
- Preliminary sign/marketing locations, heights, setbacks
- Signage specifications
- Manufacturing and installation of signs



## ➤ Ferry Terminals and Ferries Bicycle Parking

San Francisco (Ferry Building)	Bay Wheels/public racks			
Larkspur Landing	Bike racks inside and outside terminal			
Tiburon	Fence near dock serves as bike parking			
Sausalito	High capacity bike staging/parking area			
Angel Island	Bike rentals on island/public bike racks			
3 Spaulding Class Ferries	Slower	Weekends	150+ bicycle capacity	
4 multi-hull catamaran ferries	Faster	Weekdays	20-30 bicycle capacity	Larkspur-SF

## ➤ Ferry Bicycle Use

While auto commuting has declined since Covid, bicycle use is strong on some commute and tourist trips, growing slowly.

Del Norte (Catamaran) Wed Aug 16 7:55 am

Larkspur-SF 20/30 spaces, 23 bikes

San Francisco (Spaulding) Wed Aug 16 4:57 pm

Sausalito-SF 150 spaces, 167 bikes

Marin (Spaulding) Sat July 15 5:16pm

Sausalito-SF 150 spaces 174 bikes

Marin (Spaulding) Sat July 29 5:16pm

Sausalito-SF 150 spaces 180 bikes



## ➤ Larkspur Landing





## ➤ Larkspur Landing





## ➤ SMART & Other Connections



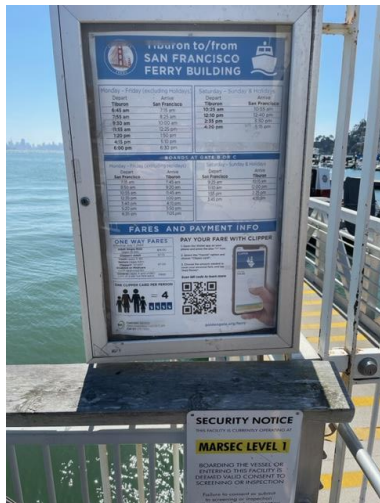
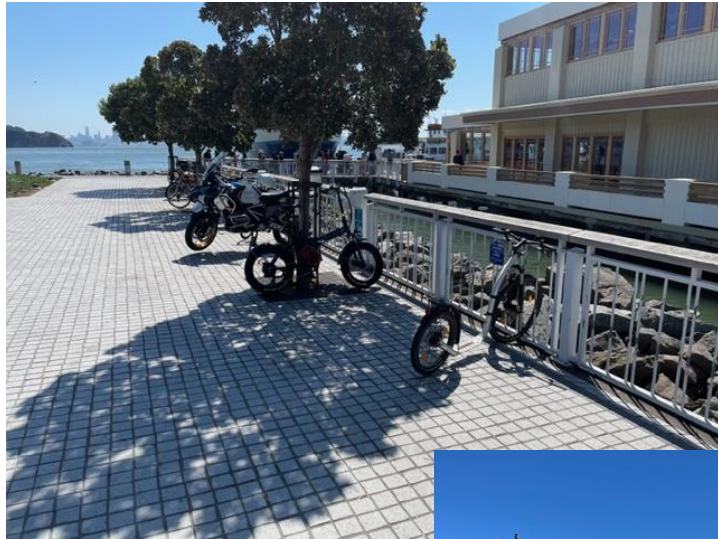


## ➤ San Francisco (Ferry Building)





# ➤ Tiburon





## ➤ Sausalito





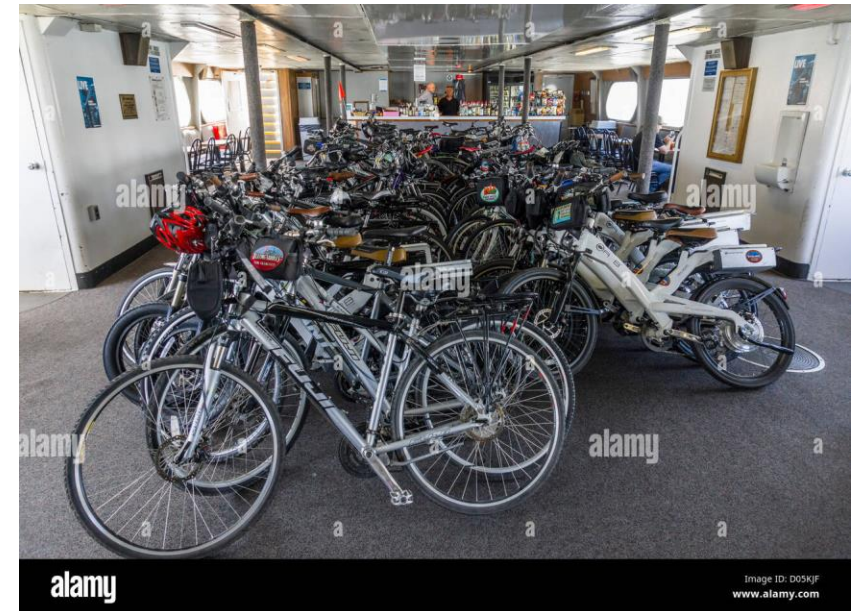
- **Catamaran Ferry 20-30 spaces**
- **Del Norte on Sausalito Run: 43 spaces**
- **Napa on Sausalito Run: 59 bikes**





➤ **Spaulding Class Ferry 150+- spaces**

➤ **Sausalito-SF            9/1/19            287 spaces**



➤ **Overall GGBHTD and local agencies have done a great job improving access to and bike parking at ferry terminals, and on the ferries**

➤ **Potential Projects Include:**

- Larkspur Ferry Terminal - SMART connection
- Bike share/rentals/station at Larkspur Landing Ferry Terminal
- Replacing 'wheel bender' bike racks
- Considering higher volume racks on boats
- More consistent GGBHTD signage
- Ticket machine and new racks in Tiburon

**Thank you!**



