



Agenda Item No. 4

To: Transportation Committee/Committee of the Whole
Meeting of February 11, 2010

From: Alan R. Zahradnik, Director of Planning
Celia G. Kupersmith, General Manager

Subject: **MONTHLY REPORT ON BRIDGE TRAFFIC, TRANSIT RIDERSHIP
TRENDS, AND TRANSIT SERVICE PERFORMANCE**

Attached for the Committee's information are three charts showing the annual trend lines for the 12-month period ending December 2009:

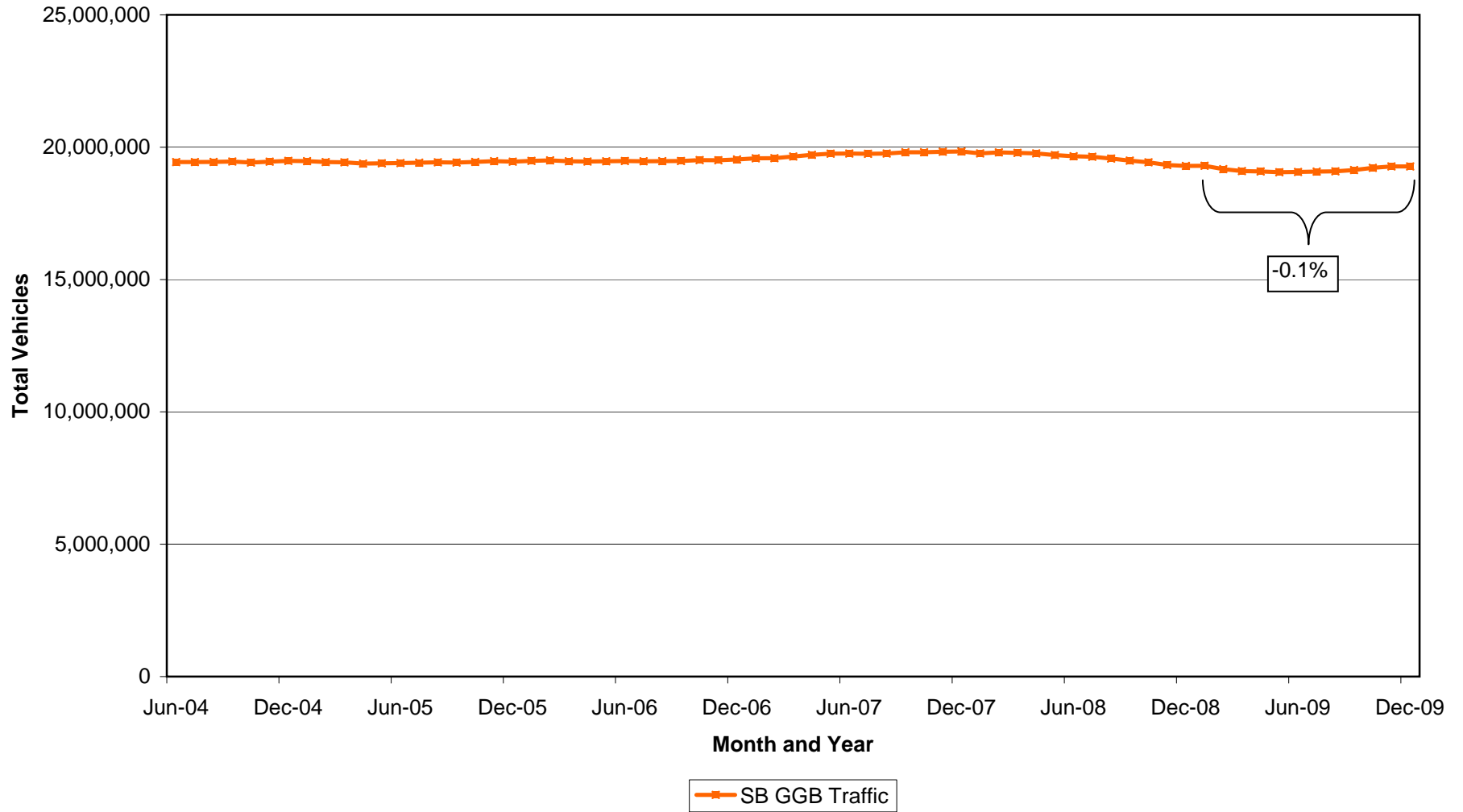
- Golden Gate Bridge – southbound traffic as recorded in the toll lanes;
- Golden Gate Ferry – total boarding passengers as recorded in the daily vessel logs; and
- Golden Gate Transit Bus – total boarding passengers as recorded in on-board fare collection equipment.

In summary, at the end of December 2009, Bridge traffic and Ferry and Bus ridership continued to decrease from the previous year's levels. The general economic recession is likely the main cause of these declines. While Bridge traffic is recovering slowly from its decline, ferry and bus ridership are still well below previous-year levels. In particular, bus ridership continues to drop significantly below last year's peak.

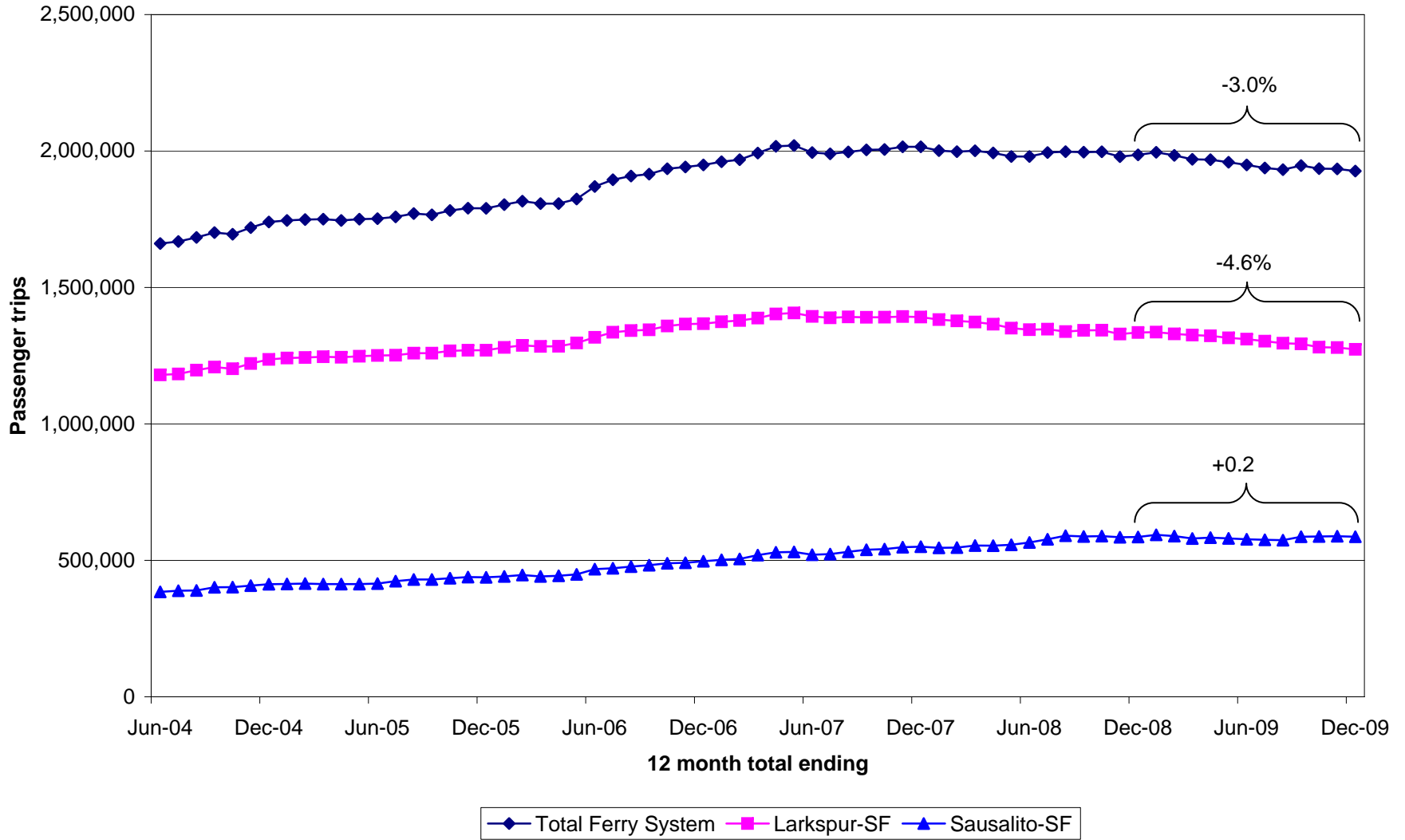
Also attached is the Transit Service Performance Statistics Report for the month of December 2009.

The report shows how Golden Gate Transit Bus and Golden Gate Ferry services operated in December 2009 relative to performance targets set forth in the District's Short-Range Transit Plan. During the month of December 2009, bus and ferry productivity as measured by passengers per trip and load factor declined as a result of the recession and seasonal fluctuations.

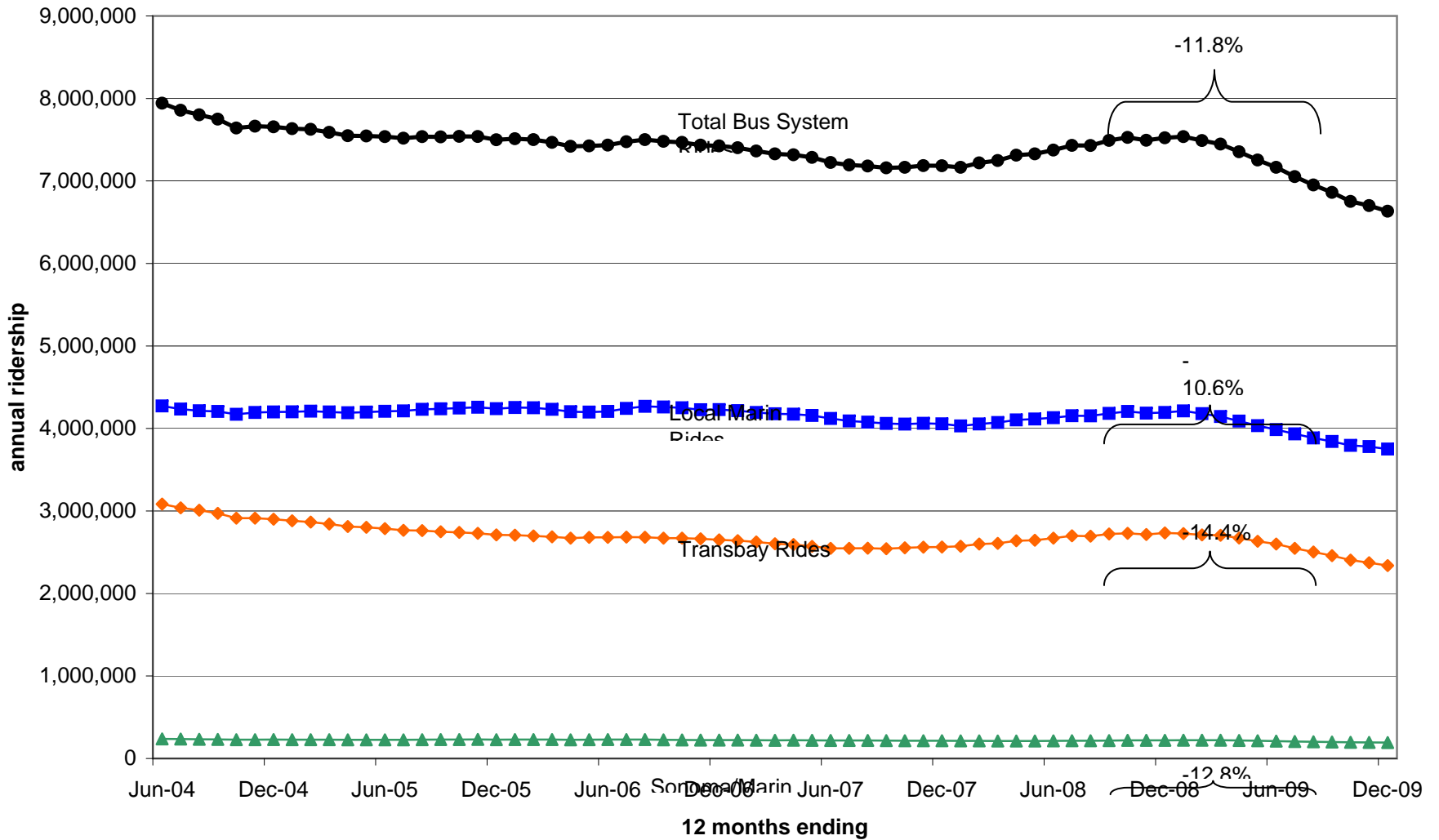
SB Golden Gate Bridge Traffic Trend
12 Month Running Total - From June 2004 to December 2009
Showing % Annual Change in Traffic for the 12 Months Ending December 2009



Golden Gate Ferry Ridership Trend
 12 month running total from June 2004 through December 2009
 showing % annual change in ridership for the 12 months ending December 2009



GGT Bus Ridership Trend
 12 month running total from June 2004 through December 2009
 showing % annual change in ridership for the 12 months ending December 2009



**Transit Service Performance Statistics
For the month of: DECEMBER 2009**

Golden Gate Transit Bus – system total

<u>PASSENGERS</u>	<u>Dec 09</u>	<u>Nov 09</u>	<u>% Chg</u>	<u>Dec 08</u>	<u>% Chg</u>
Total:	505,772	526,168	-3.9%	574,307	-11.9%
Avg/WD	19,799	22,080	-10.3%	22,668	-12.7%
Avg/Sat	9,193	10,174	-9.6%	10,373	-11.4%
Avg/Sun-Hol	6,652	7,328	-9.2%	6,848	-2.9%

<u>PERFORMANCE MEASURE</u>	<u>Performance</u>	<u>Target</u>
Passengers per Bus Trip	20	10-20
Load Factor (passengers/seats)	44.5%	50-80%
Passengers per Bus Service Hour	17	15-20
Percent of Scheduled Service Cancelled	0.31%	<1%
Percent of Bus Trips with Overloads	0.01%	<1%
Bus Accidents	0	<2
Schedule Adherence (On-Time)	N/A	90%
Farebox Recovery	23.1%	25%

Golden Gate Ferry – system total

<u>PASSENGERS</u>	<u>Dec 09</u>	<u>Nov 09</u>	<u>% Chg</u>	<u>Dec 08</u>	<u>% Chg</u>
Total:	132,838	132,276	0.4%	140,856	-5.7%
Avg/WD	5,380	5,618	-4.2%	5,665	-5.0%
Avg/Sat	2,013	2,983	-32.5%	2,659	-24.3%
Avg/Sun-Hol	1,609	2,268	-29.1%	1,396	15.3%

<u>PERFORMANCE MEASURE</u>	<u>Performance</u>	<u>Target</u>
Passengers per Ferry Trip	91	100-150
Load Factor (passengers/seats)	17.2%	50-80%
Passengers per Ferry Service Hour	116	100-150
Percent of Scheduled Service Cancelled	0.00%	<1%
Percent of Ferry Trips with Overloads	0.00%	0.0%
Ferry Accidents	0	0
Schedule Adherence (On-Time)	95.7%	95%
Farebox Recovery	43.0%	40%