



Dated: August 19, 2010

ADDENDUM NO. 1

CONTRACT NO. 2011-FT-3

LARKSPUR FERRY TERMINAL UTILITY REHABILITATION

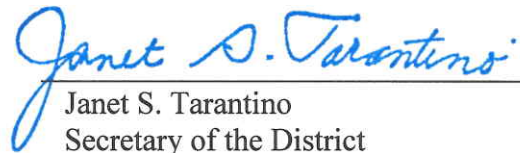
To all Prospective Bidders:

The Golden Gate Bridge, Highway and Transportation District (District) herewith issues Addendum No. 1 to the above-referenced Bid. Addendum No. 1 is hereby incorporated and made part of the bid documents. Except as specifically modified by this document, all other terms and conditions remain in full force and effect.

This addendum is available for download at no charge on the District's website. To download the document, open the District's website home page at <http://www.goldengate.org>, click on Contract Opportunities, scroll down to Ferry Division and look for Contract No. 2011-FT-3.

Bidders shall also acknowledge the inclusion of Addendum No. 1 by inserting the Addendum number in the space provided on Page P-2 of the Proposal. Failure to do so may cause the District to deem the proposal as being non-responsive.

Should you have any questions regarding this Addendum, please contact Senior Civil Engineer Wilson Lau at (415) 923-2369.



Janet S. Tarantino
Secretary of the District

JST/WWL/crh

Attachments

August 19, 2010

ADDENDUM NO. 1
CONTRACT NO. 2011-FT-3, LARKSPUR FERRY TERMINAL
UTILITY REHABILITATION

The following changes have been made to Contract No. 2011-FT-3. Deleted items are in ~~strikethrough~~ and new items are underlined.

PROPOSAL

1. **REPLACE** Proposal Attachment C, Acknowledgment of Insurance Requirements, bullet A, Workers' Compensation, on page P-5 with the following:

A: Workers' Compensation Insurance including United States Longshoremen & Harbor Workers Act coverage, as per statutory requirements.

By signing below, Bidder is aware of the provisions of Section 3700 of the Labor Code which requires every employer to be insured against liability for workers' compensation or to undertake self-insurance in accordance with the provision of that code, and if awarded a Contract, Bidder will comply with such provisions before commencing the performance of the Work of this Contract.

This project may expose the Contractor's employees to various Federal Workers Compensation acts. It is the Contractor's responsibility to determine the appropriate Workers Compensation coverage for his employees. Contractor will hold harmless and indemnify Owner for any and all claims arising from any type of claim arising out injury to his employees.

SPECIAL PROVISIONS

1. **REPLACE** Section 7, "Legal Relations and Responsibility," paragraph S7.10, Insurance Provisions, first bullet, Workers' Compensation, on page SP 7-9 with the following:

- Workers' Compensation Insurance including United States Longshoremen & Harbor Workers Act coverage, as per statutory requirements. This project may expose the Contractor's employees to various Federal Workers Compensation acts. It is the Contractor's responsibility to determine the appropriate Workers Compensation coverage for his employees. Contractor will hold harmless and indemnify Owner for any and all claims arising from any type of claim arising out injury to his employees.

ADDENDUM NO. 1
CONTRACT 2011-FT-3, LARKSPUR FERRY TERMINAL
UTILITY REHABILITATION

Page 2 of 4

2. **REPLACE** Section 9, “Measurement and Payment,” paragraph S9.05, Payment Item No. 3 – Replace Sewer Pipelines, first paragraph, on page SP 9-3 with the following:

This payment item shall include full compensation for all labor, materials, tools and equipment, and all incidental work required for replacing sewer pipelines, including removal and disposal of existing sewer pipelines and sewage, and furnishing and installing new sewer pipelines including flex hoses, shut off valves, check valves, fittings, painting of galvanized steel pipe and fittings, temporary scaffold and work platform, pressure testing, construction phasing and other related work items as shown in the Contract Plans and specifications and as directed by the Engineer.

3. **REPLACE** Section 9, “Measurement and Payment,” paragraph S9.05, Payment Item No. 4 – Replace Bilge Pipelines, first paragraph, on page SP 9-3 with the following:

This payment item shall include full compensation for all labor, materials, tools and equipment, and all incidental work required for replacing bilge pipelines, including removal and disposal of existing bilge pipelines and bilge water, and furnishing and installing new bilge pipelines including flex hoses, shut off valves, check valves, fittings, painting of galvanized steel pipe and fittings, temporary scaffold and work platform, pressure testing, construction phasing and ~~all~~ other related work items as shown in the Contract Plans and Specifications and as directed by the Engineer.

4. **REPLACE** Section 9, “Measurement and Payment,” paragraph S9.05, Payment Item No. 5 – Replace Bilge Tanks, first paragraph, on page SP 9-3 with the following:

This payment item shall include full compensation for all labor, materials, tools and equipment, and all incidental work required for replacing bilge storage tank and bilge overflow tank, including removal and disposal of existing bilge tanks and stored liquid, cleaning existing bilge tanks prior to disposal, and furnishing and installing new bilge tanks including support saddles and plates, anchor bolts, non shrink grout, manholes, vent pipes, fittings, level gauges, liquid sampling manifold, inspection ladders, connecting to bilge pipelines and tank level monitor/alarm panel, steel painting, pressure testing, providing and removing temporary bilge storage tank and temporary secondary containment, and all other related work items as shown in the Contract Plans and Specifications and as directed by the Engineer.

TECHNICAL SPECIFICATIONS

1. **REPLACE** Section 221313, “Sanitary Sewer,” Part 1 – General, paragraph 1.1, bullet A, on page TS 221313-1 with the following:
 - A. This Section includes all work required for furnishing and installing the sanitary sewer pipes, pipe supports, flexible hoses, shut-off valves, check valves, fittings, painting of steel pipes and fittings, and connection to existing sewer system as shown in the Plans and Specifications and as directed by the Engineer.

ADDENDUM NO. 1
CONTRACT 2011-FT-3, LARKSPUR FERRY TERMINAL
UTILITY REHABILITATION

Page 3 of 4

2. **REPLACE** Section 221313, “Sanitary Sewer,” Part 1 – General, paragraph 1.3, bullet A, on page TS 221313-1 with the following:
 - A. Product Data: Submit the respective manufacturers’ catalog cuts and other pertinent data indicating proposed piping materials, valves, flexible pipe connectors (flexible hoses), fittings, paint materials, accessories, details, and construction information.

3. **REPLACE** Section 221313, “Sanitary Sewer,” Part 2 – Products, paragraphs 2.3, on page TS 221313-2 with the following:
 - 2.3 ~~**Valve and Couplings.** Refer to Technical Specifications Section TS 150500, “Basic Piping Materials and Methods” and the details as shown in the Plans or approved equal.~~
Pressure Sewer Piping, Valves and Fittings. Pressure sewer system shall have schedule 80 galvanized steel pipe and flanged fittings with one coat of “Amerlock 2 Epoxy” at 5 mil DFT and one topcoat of “Amercoat 450H Polyurethane” at 5 mil DFT, or approved equal, applied per manufacturer’s specifications and instructions. Shut-off valves and check valves shall be as shown in the Plans or approved equal.

4. **REPLACE** Section 231000, Bilge Storage Tanks, Part 2 – Products, paragraph 2.1, bullets C, item 5, on page TS 231000-3 with the following:
 5. The tank top, bottom, sides, inside and outside, fittings and supports shall be blast-cleaned to SSPC-SP-7, primed with 3- to 5-mil of inorganic zinc, and applied with second coat 5- to 6-mil of ~~Ameron~~ Amerlock 400 high-solids epoxy coating, and third coat 5- to 6-mil of ~~Ameron~~ Amerlock 400 in aluminum finish color, or approved equal. Steel painting shall comply with paint manufacturer’s specifications and instructions. Each coat shall be completely cured prior to applying the following coat. Contractor shall inform the Engineer, at least seven (7) days in advance, the schedule of tank surface preparation and painting so that the steel surface and each coat of painting can be inspected by the Engineer. Contractor shall perform Quality Control of steel welding and painting and submit a report to the Engineer for approval prior to delivery of the tanks.

5. **REPLACE** Section 231000, Bilge Storage Tanks, Part 3 – Execution, paragraph 3.1, bullets B and E, on page TS 231000-5 with the following:
 - B. Do not deliver bilge tanks until the temporary bilge tank ~~has~~ and temporary tank containment berm have been set up and the Site is ready for installation. Contractor shall submit temporary tank layout and containment berm details for approval. The containment berm shall be impervious and enclose the temporary bilge tank to a minimum height of 12 inches above concrete ramp at low point. Contractor shall be responsible for cleaning up any leakage or spillage of bilge water from temporary bilge tank or piping. Upon completion

ADDENDUM NO. 1
CONTRACT 2011-FT-3, LARKSPUR FERRY TERMINAL
UTILITY REHABILITATION

Page 4 of 4

the temporary bilge tank and containment berm shall be removed and disposed by Contractor. Existing bilge tanks shall be cleaned, after removal of bilge water, prior to disposal. The concrete containment area for the permanent bilge tanks shall require resurfacing and coating as shown in the Plans. Resurfacing and coating must be approved by the Engineer prior to tank installation. Coordinate with the Engineer before delivering the tanks to the Site.

- E. Contractor shall submit a Work Plan for Bilge Tanks Replacement for approval. Work Plan shall include construction sequence, timeline, temporary and permanent bilge tanks, temporary tank layout and containment berm details, equipment staging, temporary bilge pumping and disposal, cleaning and disposal of existing bilge tanks, concrete slab resurfacing and coating, tanks and piping installation, pressure tests, cleaning and all other construction details for tanks replacement. Contractor's registered engineer shall submit design calculations for temporary bilge tank supports for approval.
6. **REPLACE** Section 231000, Bilge Storage Tanks, Part 3 – Execution, paragraph 3.2, bullet A, on page TS 231000-5 with the following:
- A. Unless otherwise specified, hydrostatic test shall be applied to bilge tanks and adjacent piping system for a duration of ~~60 minutes~~ 4 hours at ~~50~~ 5 psi. Leakage shall be zero at the specified test pressure throughout the specified duration.

DRAWINGS

1. **REPLACE** Drawings Nos. 3, 10, 11, and 16 with the revised drawings attached. Revisions are "bubbled" and denoted with triangular symbols marked "1."

Attachment: Revised Drawing Nos. 3, 10, 11, and 16

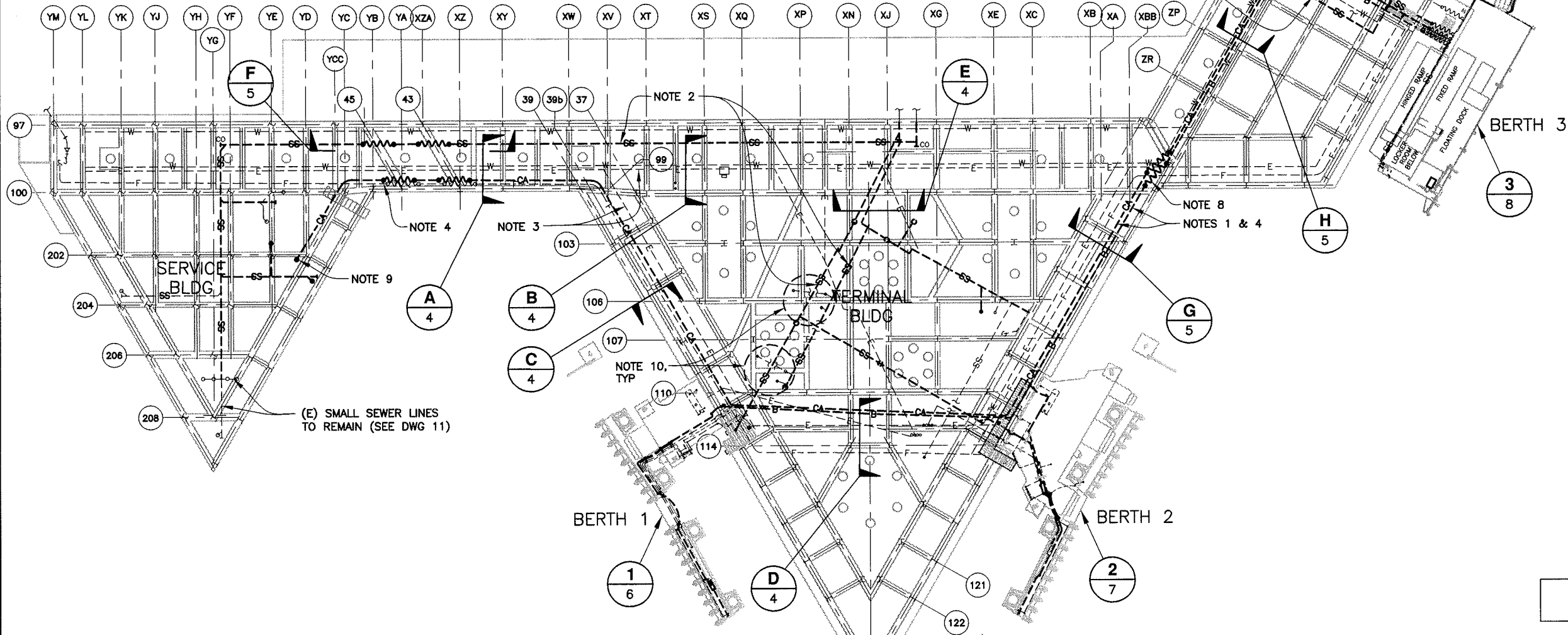
NOTES:

- (RR) ALL (E) BILGE PIPELINES FROM BERTHS TO BILGE TANKS. CONSTRUCT (N) BILGE LINES UNDER CONC DECK NEXT TO (E) LINES W/ (N) PIPE SUPPORTS. CONSTRUCT (N) BILGE LINE AT EACH BERTH ALONG (E) PIPELINE LOCATION USING (E) PIPE SUPPORTS AT RAMP & WALKWAY W/ (N) U-BOLTS, UON, ONE BERTH EA PHASE. SEE DWG 13 FOR BILGE PHASING PLAN.
- (RR) ALL (E) SANITARY SEWER PIPELINES, UON. (RR) SEWER PIPE SUPPORTS UNDER CONC DECK, UON. SEE DWG 11 FOR PHASING PLAN. (E) UNDERGROUND SEWERS SHALL REMAIN.
- (RR) ALL (E) ELECT CONDUIT SUPPORTS UNDER CONC DECK W/ (N) SUPPORTS NEXT TO (E). SEE DWG 10 FOR TYP. PS DETAILS. (E) SUPPORTS FOR ELECT CONDUITS TO INSPECTION BLDG SHALL REMAIN.
- CONSTRUCT (N) COMPRESSED AIR PIPELINES & PIPE SUPPORTS FROM (E) COMPRESSED AIR LINE AT SERVICE BLDG TO EA BERTH, NEXT TO (E) FUEL PIPE FROM SERVICE BLDG TO BERTH 1 & NEXT TO (N) BILGE PIPE FROM BERTH 1 TO BERTH 4.
- (E) 3"Ø GRAVITY SEWER PIPELINE FROM INSPECTION BLDG SHALL REMAIN (AND TIE IN TO (N) SEWER). (RR) (E) 4"Ø PRESSURE SEWER FROM BERTHS 3 & 4.
- RESURFACE & PAINT (E) BILGE CONTAINMENT CONC SLAB (SEE DET 5, DWG 12). (RR) (E) BILGE TANKS (SEE DET 6, DWG 14).

7. SEWER, BILGE & CA PIPELINES AS SHOWN ARE SCHEMATIC. ALL PIPING WORK SHALL COMPLY W/ UPC CODE, TECHNICAL SPECS & THE FOLLOWING:

- SANITARY GRAVITY SEWER PIPE SHALL BE CAST IRON SOIL PIPE W/ HUB & SPIGOT FITTINGS OR HUBLESS FITTINGS W/ NEOPRENE GASKETS & STAINLESS STL CLAMPS, "HUSKY" HD COUPLINGS OR APPROVED EQ. SANITARY PRESSURE SEWER SHALL BE SCH 80 GALV STL PIPE & FLANGED FITTINGS W/ SAME COATINGS AS BILGE & CA PIPES. SOV SHALL BE "FABRI-VALVE 6875 BI-DIRECTIONAL KNIFE GATE VALVE-4"-TYPE 316L STAINLESS STL OR APPROVED EQ. CHECK VALVE SHALL BE "FABRI-VALVE F105 SWING CHECK VALVE-4"-TYPE 316L STAINLESS STL" OR APPROVED EQ.
- BILGE & CA PIPES SHALL BE SCH 80 GALV STL PIPE & FITTINGS W/ ONE COAT OF "AMERLOCK 2" EPOXY AT 5 MIL DFT & ONE COAT OF "AMERCOAT 450 H" POLYURETHANE AT 5 MIL DFT, OR APPROVED EQ. SOV SHALL BE "APOLLO 86A-100 SERIES TYPE 316 STAINLESS STL" 3-PC FULL PORT BALL VALVE OR APPROVED EQ. CHECK VALVE SHALL BE "APOLLO 62-100 SERIES TYPE 316 STAINLESS STL" BALL-CONE CHECK VALVE OR APPROVED EQ.
- SEWER FLEX HOSES SHALL BE "TITAN INDUSTRIES EW317" BLACK NITRILE HOSE W/ MULTIPLE PLYS POLYESTER TIRE CORD W/ CS WIRE HELIX REINFORCEMENT, 150 PSI WORKING PRESSURE, W/ BUILT-IN STAINLESS STL FITTINGS OR APPROVED EQ. BILGE & COMPRESSED AIR HOSES SHALL BE "GOODYEAR FLEXWING PETROLEUM" OR "GOODYEAR FLEXWING VERSAFUEL" HOSE, 150 PSI WORKING PRESSURE W/ STAINLESS STL FITTINGS OR APPROVED EQ.

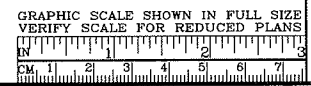
- PROVIDE FLEX HOSES AT ALL CONC EXP JOINTS & ALL MOVING JOINTS BET DECK, RAMP, WALKWAY & FLOOR TYP. CONTRACTOR SHALL PROVIDE ADEQUATE HOSE LENGTHS TO FORM FLEX LOOPS. HOSE LENGTHS SHOWN IN DRAWINGS ARE SCHEMATIC ONLY, TYP.
- (N) CA PIPELINE SHALL TEE OFF (E) CA PIPE, GO THROUGH (E) BLDG WALL, FOLLOW OUTSIDE WALL DOWN THROUGH (E) CONC SLAB, & TURN TOWARD BERTH 1 AS SHOWN. INSTALL A SOV OUTSIDE BLDG. INSTALL SLEEVE & SEAL AT BLDG WALL & CONC SLAB.
- FIELD VERIFY NEWLY INSTALLED MENS & WOMENS RESTROOMS SEWER PIPES FOR EXACT LOCATION. RE-CONNECT (E) SEWER PIPE LINES TO (N) SEWER PIPES. (E) SEWER PIPES LAYOUT AS SHOWN ARE SCHEMATIC.



- LEGEND:**
- F --- (E) FUEL PIPELINES
 - SS --- (E) SANITARY SEWER PIPELINES
 - W --- (E) WATER PIPELINES
 - B --- (E) BILGE PIPELINES
 - E --- (E) ELECTRICAL CONDUITS (NOTE 3)
 - B --- (N) BILGE PIPELINES (NOTE 1)
 - SS --- (N) SANITARY SEWER PIPELINES (NOTE 2)
 - CA --- (N) COMPRESSED AIR LINE (NOTE 4)
 - (wavy) --- (N) FLEX HOSE

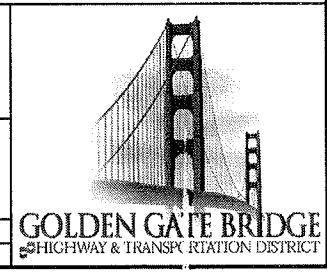
ADDENDUM NO. 1

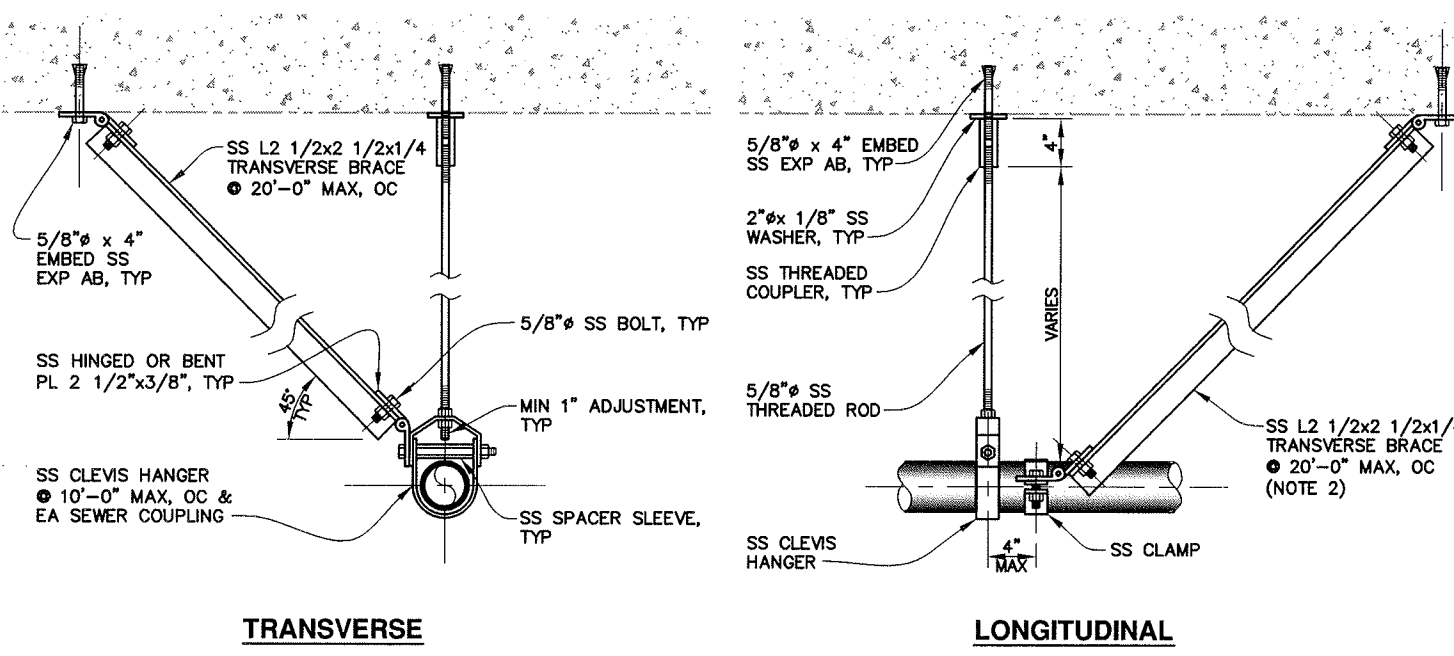
UTILITY REHABILITATION PLAN
SCALE: 1"=25'



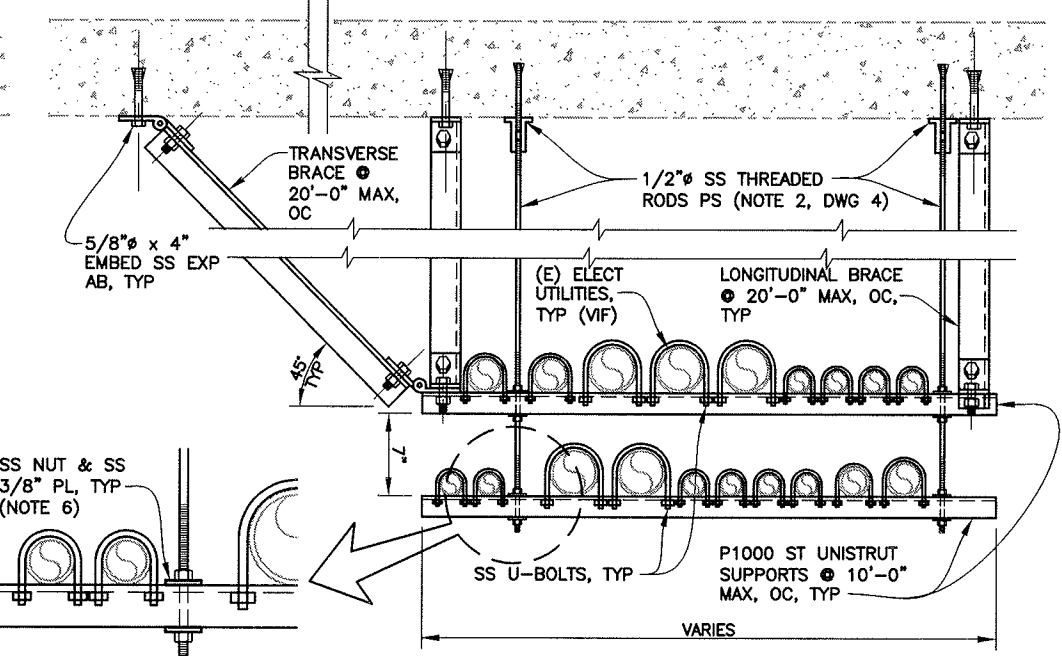
APPROVED BY 	PROJECT ENGINEER 7-27-10 DATE								
APPROVED BY 	DISTRICT ENGINEER 7-27-10 DATE								
<table border="1"> <thead> <tr> <th>NO.</th> <th>REVISIONS</th> <th>BY</th> <th>DATE</th> </tr> </thead> <tbody> <tr> <td>1</td> <td>ADDENDUM NO. 1</td> <td>WWL</td> <td>8/19/10</td> </tr> </tbody> </table>		NO.	REVISIONS	BY	DATE	1	ADDENDUM NO. 1	WWL	8/19/10
NO.	REVISIONS	BY	DATE						
1	ADDENDUM NO. 1	WWL	8/19/10						
<table border="1"> <tr> <td>CONTRACT NO. 2011-FT-3</td> <td>DWG NO. 3</td> </tr> <tr> <td>CADD FILE 11F03P003ADD1</td> <td></td> </tr> </table>		CONTRACT NO. 2011-FT-3	DWG NO. 3	CADD FILE 11F03P003ADD1					
CONTRACT NO. 2011-FT-3	DWG NO. 3								
CADD FILE 11F03P003ADD1									

PROJECT TITLE LARKSPUR FERRY TERMINAL UTILITY REHABILITATION			
SHEET TITLE UTILITY REHABILITATION PLAN			
DESIGNED CW/WWL	CHECKED JDK	DRAWN GLM	
SCALE AS-NOTED	DATE 27JUL10		



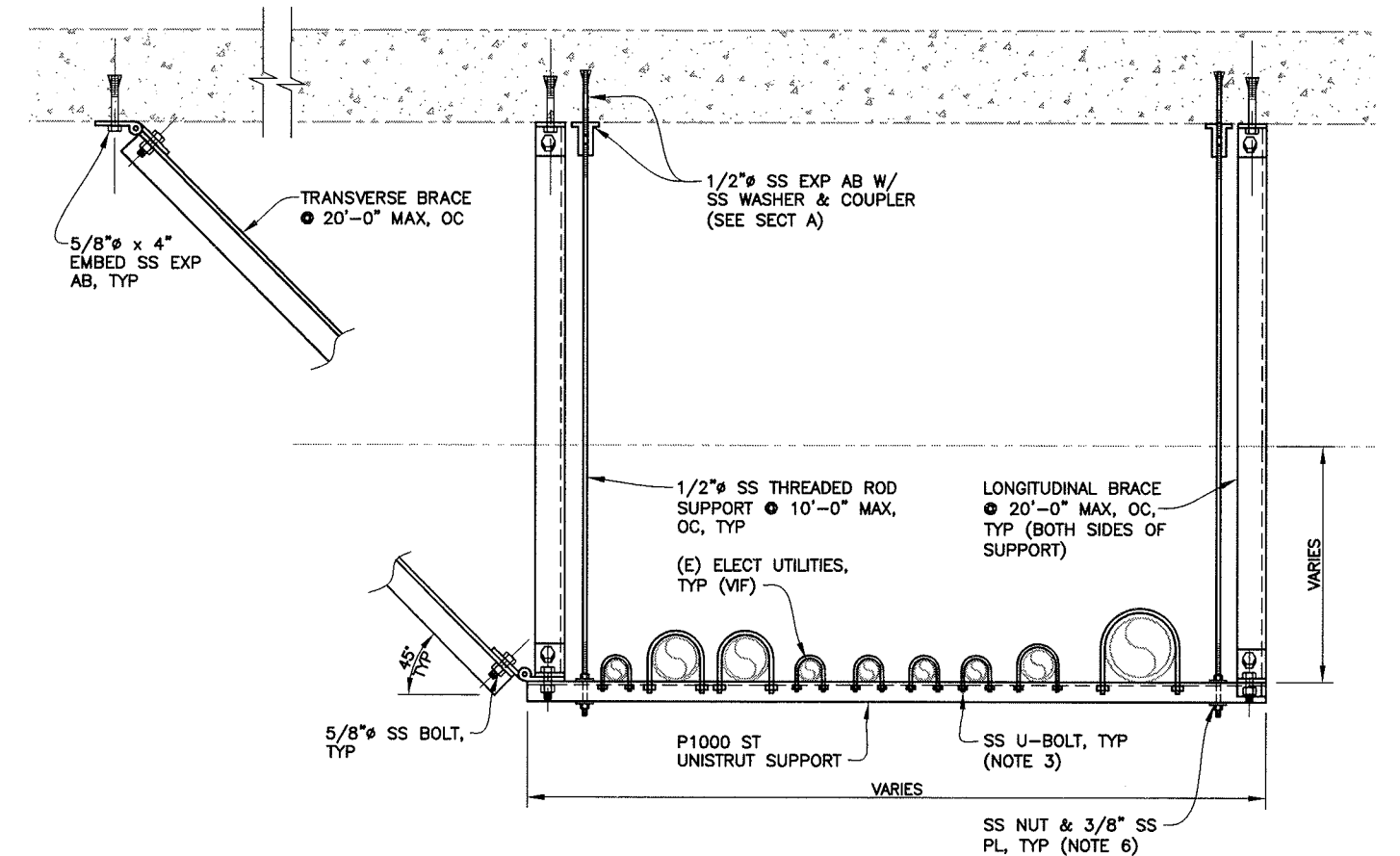


A TYPICAL PIPE SUPPORT (TYPE A)
SCALE: 1 1/2"=1'-0" (NOTE 5)

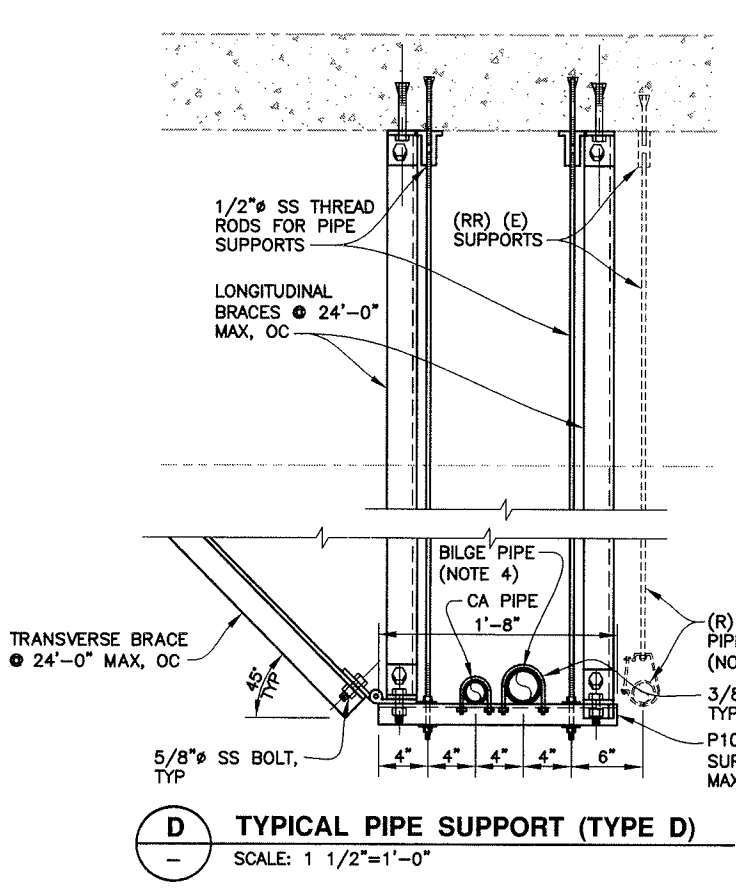


B TYPICAL PIPE SUPPORT (TYPE B)
SCALE: 1 1/2"=1'-0"

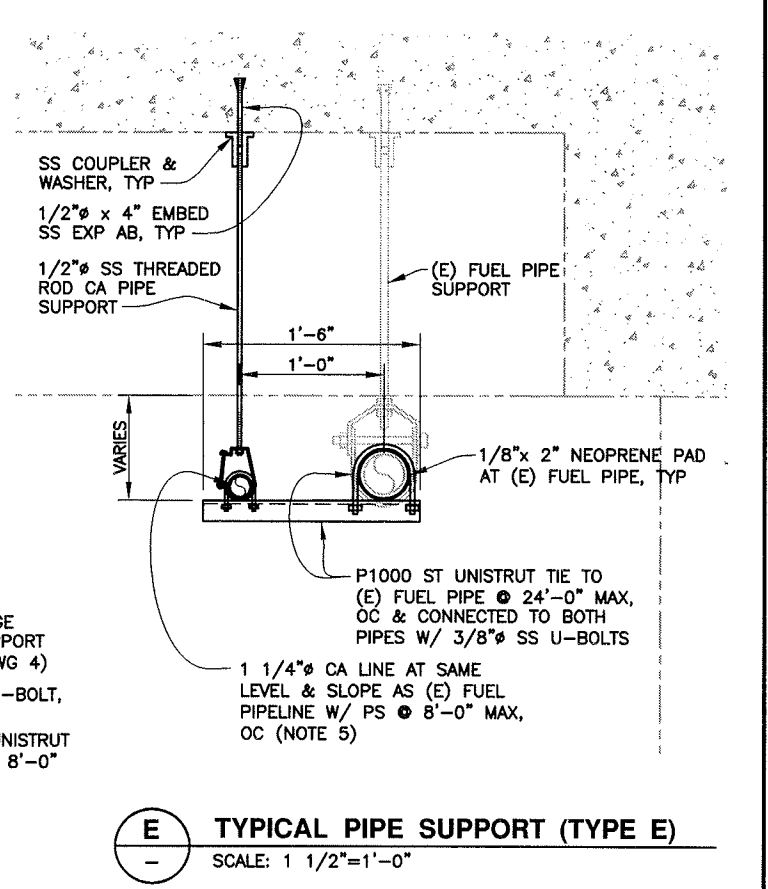
- NOTES:**
- SEE NOTES ON DWG 4.
 - TRANSVERSE & LONGITUDINAL BRACES SHALL BE SS L2 1/2x2 1/2x1/4, UP TO 5 FT LENGTH TYP, UON. USE SS L3x3x1/4 FOR BRACING EXCEEDING 5 FT LENGTH.
 - INSTALL (N) U-BOLTS FOR (E) ELECT CONDUITS ON (N) PS, TYP.
 - PROVIDE TYPE A PS @ 10 FT MAX, OC FOR (N) BILGE PIPELINE SIMILAR TO SECT A, WHERE THERE IS NO ADJACENT CA PIPE.
 - PROVIDE TYPE A PS @ 8 FT MAX, OC FOR (N) CA PIPELINE SIMILAR TO SECT A, WHERE THERE IS NO ADJACENT BILGE OR FUEL PIPE.
 - ALL PS MATERIALS SHALL BE TYPE 316L SS, TYP. UON. UNISTRUT CHANNELS SHALL BE TYPE 316 SS. CUSH-A-CLAMP ASSEMBLY U-BOLT SERIES W/ TYPE 316L SS U-BOLTS.



C TYPICAL PIPE SUPPORT (TYPE C)
SCALE: 1 1/2"=1'-0"



D TYPICAL PIPE SUPPORT (TYPE D)
SCALE: 1 1/2"=1'-0"



E TYPICAL PIPE SUPPORT (TYPE E)
SCALE: 1 1/2"=1'-0"

ADDENDUM 1



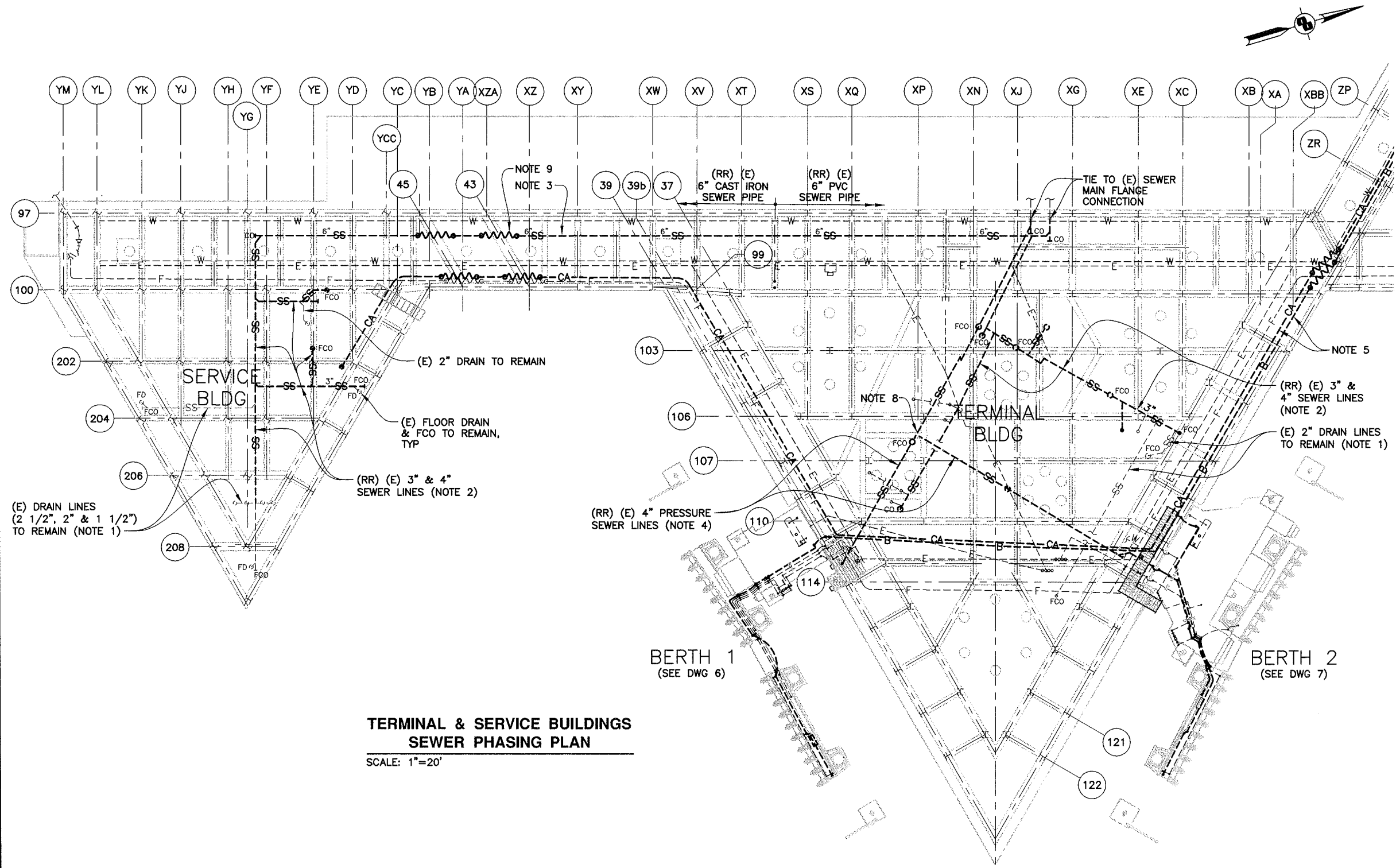
APPROVED BY		APPROVED BY	
PROJECT ENGINEER	7-27-10	DISTRICT ENGINEER	7-27-10
DATE		DATE	

PROJECT TITLE			
LARKSPUR FERRY TERMINAL UTILITY REHABILITATION			
SHEET TITLE			
TYPICAL PIPE SUPPORT DETAILS			
DESIGNED	WWL	CHECKED	JDK
SCALE	AS-NOTED	DATE	27JUL10



NOTES:

- (E) FD, FCO & PLUMBING FIXTURES ON CONC DECK & ALL DRAIN LINES, 2 1/2" & SMALLER, SHALL REMAIN & SHALL BE RECONNECTED TO (N) SEWERS, TYP. (RR) (E) SEWER CO'S BELOW DECK TO MATCH (E) SIZES, TYP.
- (RR) ALL GRAVITY SEWER LINES, 3" & 4", BELOW SERVICE & TERMINAL BLDGS W/ SAME SIZE CISP AT (E) LOCATION W/ (N) PIPE SUPPORTS. REPLACE SEWER LINE ONE SECTION AT A TIME, STARTING FROM UPSTREAM, TO MINIMIZE INTERRUPTION OF SERVICE TO BLDG OCCUPANTS. CONTRACTOR SHALL PROVIDE TEMP SANITARY FACILITY (3 TOILETS W/ ONE ADA COMPLIANT) AT EA BLDG LOCATION WHEN (E) RESTROOMS ARE CLOSED FOR SEWER REPLACEMENT. SEWER LINE SERVING 2 OR MORE BRANCH LINES SHALL BE REPLACED DURING WEEKENDS OR AFTER BUSINESS HOURS.
- INSTALL (N) 6" CISP GRAVITY SEWER MAIN NEXT TO (E) SEWER MAIN AT SAME SLOPE. AFTER COMPLETION OF GRAVITY SEWER REPLACEMENT BELOW SERVICE BLDG & TERMINAL BLDG, TIE 4" SEWER LINES TO (N) 6" SEWER MAIN & TIE (N) 6" SEWER MAIN TO (E) SEWER MAIN GOING TO (E) LIFT STATION DURING WEEKENDS WITHIN AN 8-HOUR PERIOD. (R) (E) SEWER MAIN AFTER (N) SEWER SYSTEM IS COMPLETED.
- INSTALL (N) 4" GSP PRESSURE SEWER LINE NEXT TO (E) SEWER LINE. (RR) BERTH 1 SEWER LINE WHILE MAINTAINING (E) SERVICE OF BERTH 2. AFTER COMPLETION AT BERTH 1, TIE (N) SEWER TO (E) FLANGE CONNECTION TO (E) LIFT STATION DURING WEEKENDS WITHIN AN 8-HOUR PERIOD, & REPEAT (N) SEWER REPLACEMENT AT BERTH 2. AFTER COMPLETION OF (N) SEWER LINES AT BERTHS 1 & 2, REPEAT SIMILAR PROCEDURES TO REPLACE PRESSURE SEWER LINES AT BERTHS 3 & 4 SHOWN ON DWG 3.
- SEE DWG 13 PHASING SEQUENCE OF BILGE & CA PIPELINES.
- SEE GENERAL NOTES ON DWG 1 FOR SCHEDULE RESTRICTIONS ON UTILITY WORK AT BERTHS 3 & 4 FLOATS.
- SEE DWG 3 FOR UTILITY LEGEND & SPECS OF SEWER PIPE, VALVES & FLEX HOSES.
- INSTALL SOV & CV VALVES ON BOTH BRANCH PRESSURE SEWER LINES TO BERTHS 1 & 2 AT JUNCTION POINT.
- INSTALL SEWER FLEX HOSES AT ALL CONC EXP JOINTS & ALL MOVING JOINTS BET DECK, RAMP, WALKWAY & FLOAT, TYP.

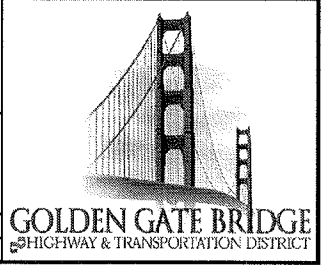


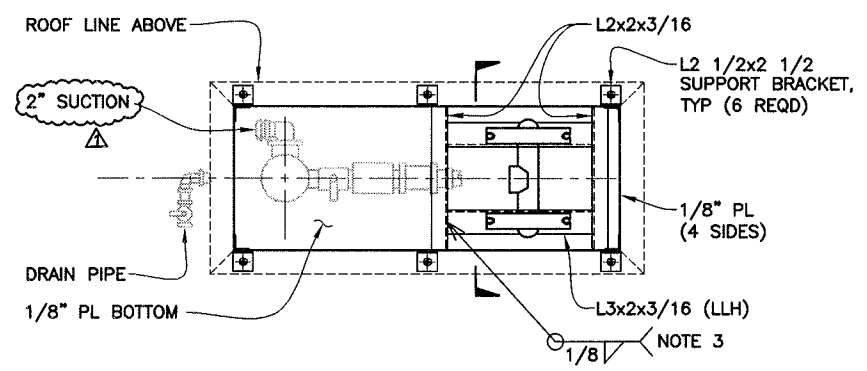
**TERMINAL & SERVICE BUILDINGS
SEWER PHASING PLAN**
SCALE: 1"=20'

ADDENDUM 1

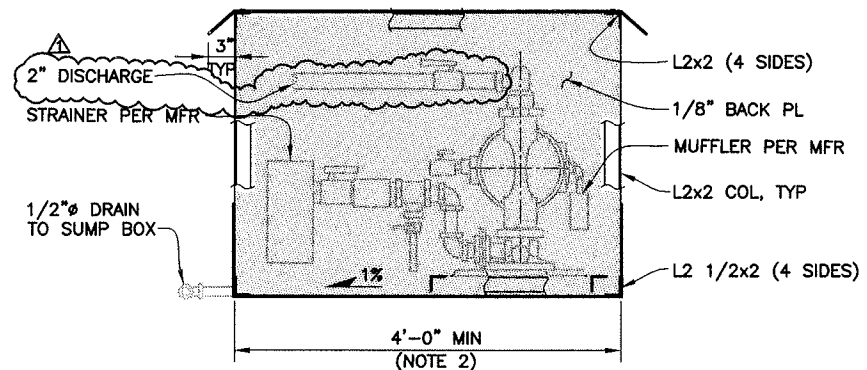


APPROVED BY PROJECT ENGINEER 7-27-10 DATE	<table border="1"> <tr> <th>NO.</th> <th>REVISIONS</th> <th>BY</th> <th>DATE</th> </tr> <tr> <td>1</td> <td>ADDENDUM NO. 1</td> <td>WWL</td> <td>8/19/10</td> </tr> </table>	NO.	REVISIONS	BY	DATE	1	ADDENDUM NO. 1	WWL	8/19/10	APPROVED BY DISTRICT ENGINEER 7-27-10 DATE	PROJECT TITLE LARKSPUR FERRY TERMINAL UTILITY REHABILITATION				
		NO.	REVISIONS	BY	DATE										
1	ADDENDUM NO. 1	WWL	8/19/10												
SHEET TITLE TERMINAL & SERVICE BUILDINGS SEWER PHASING PLAN															
CONTRACT NO. 2011-FI-3 CADD FILE 11F03P011ADD1			DWG NO. 11			DESIGNED WWL CHECKED JDK DRAWN GLM SCALE AS-NOTED DATE 27JUL10									



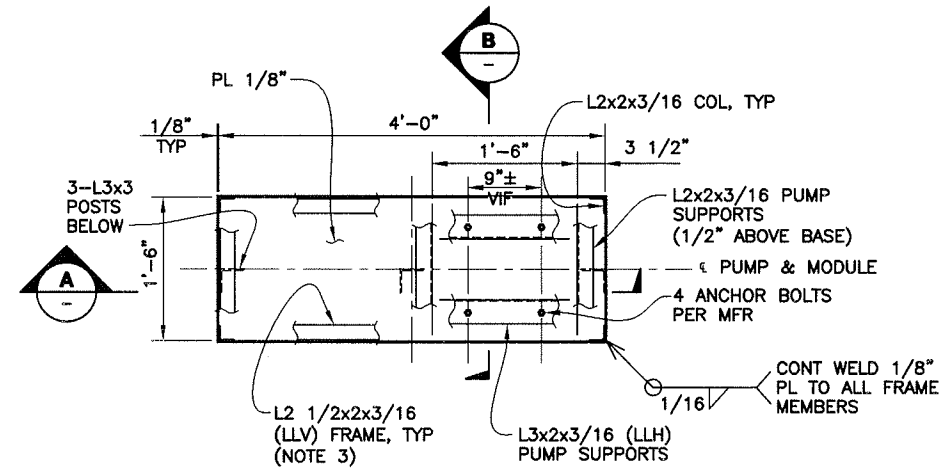


PLAN

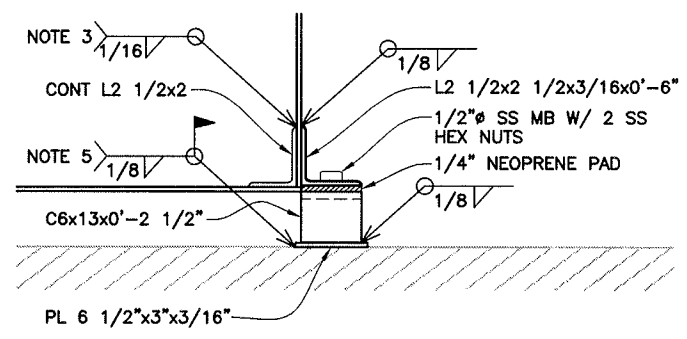


LONGITUDINAL SECTION

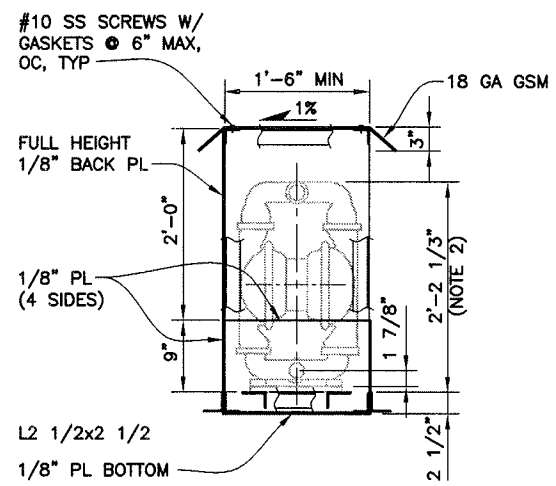
1 TYP BILGE PUMP MODULE (4 REQD)
SCALE: 1"=1'-0" (SUPPORTS NOT SHOWN) (NOTE 1)



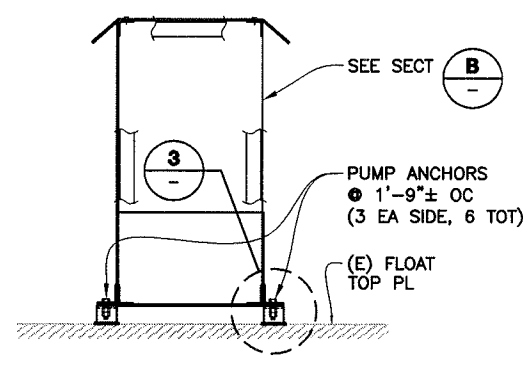
2 PUMP MODULE BASE FRAMING PLAN
SCALE: 1"=1'-0"



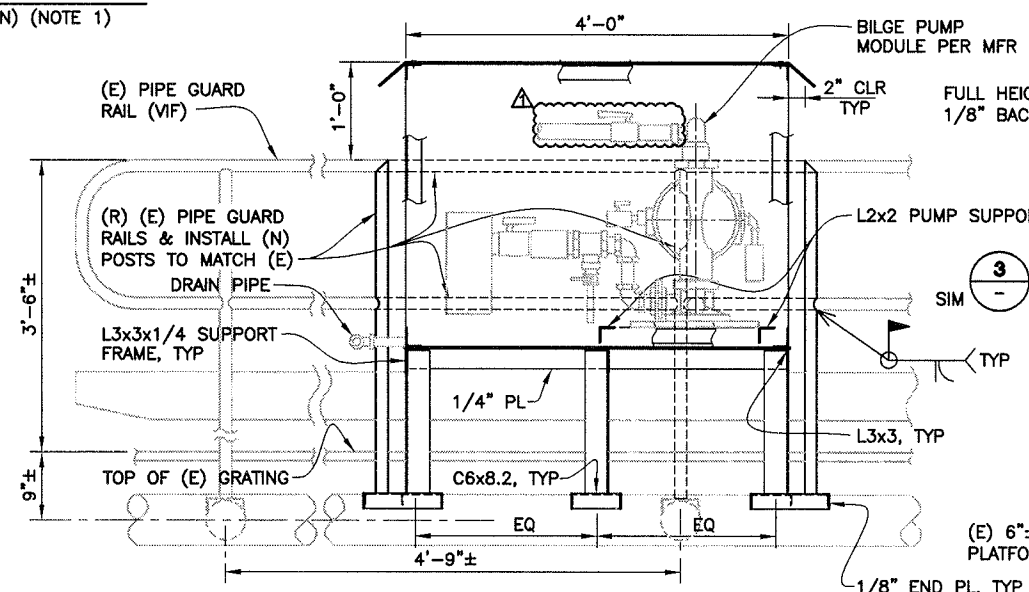
3 DETAIL
SCALE: 3"=1'-0"



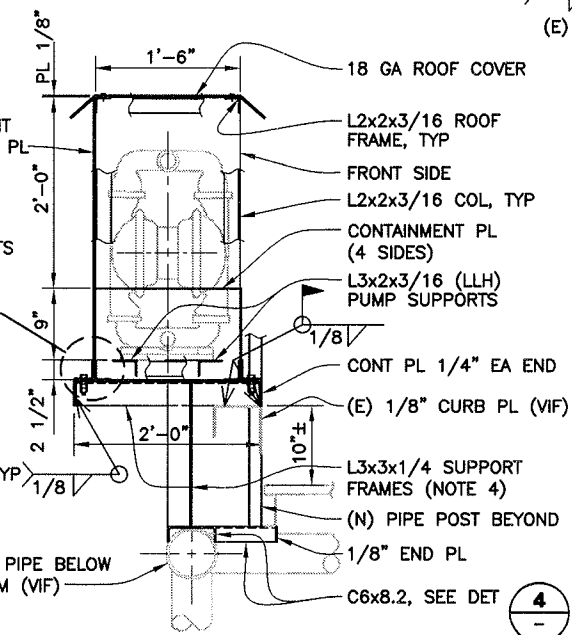
CROSS SECTION



E SECTION (BERTHS 3 & 4)
SCALE: 1"=1'-0"



A SECTION
SCALE: 1"=1'-0"

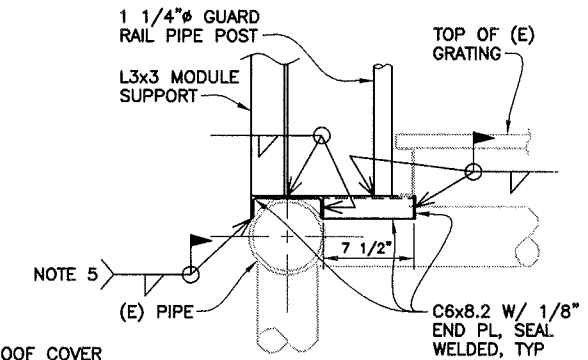


B SECTION
SCALE: 1"=1'-0"

BILGE PUMP MODULE AT BERTHS 1 & 2
AS NOTED (NOTE 1)

NOTES:

- BILGE PUMP SHALL BE "WILDEN MODEL 08-13167 PX8/AAAAA/BNS/BN/BN" AIR-POWERED 2" DIAPHRAM PUMP W/ "WILDEN CFDR 60-2-1/2" PORTS AUTORAIN FILTER/REGULATOR" OR APPROVED EQ.
- VERIFY ALL PUMP DIMENSIONS PER MFR. INCREASE MODULE DIMENSIONS AS NEEDED TO FIT BILGE PUMP & ALL ACCESSORIES W/ 2" MIN CLR ALL AROUND.
- ALL MODULE FRAMING & SUPPORT STL MEMBERS SHALL BE SHOP-WELDED W/ CONT BUTT WELD OR FILLET WELD ALL AROUND, AS APPROPRIATE, AS COMPLETE UNITS FOR LIFTING INTO PLACE & BOLTED TO SUPPORT BRACKETS OR WELDED TO (E) PIPES.
- ALL PUMP MODULE FRAMING & SUPPORT MEMBERS SHALL BE GALV STL W/ ONE COAT OF "AMERLOCK 2" EPOXY AT 5 MIL DFT & ONE FINISH COAT OF "AMERCOAT 450 H" POLYURETHANE AT 5 MIL DFT, OR APPROVED EQ, APPLIED PER MFR SPECS & INSTRUCTIONS, TYP.
- CLEAN (E) DECK PL & PIPES PRIOR TO WELDING. REPAIR WELD ZONE STL SURFACE W/ 2 COATS OF ORGANIC ZINC PRIMER PRIOR TO APPLYING "AMERLOCK 2" & "AMERCOAT 450H" PER NOTE 4.



4 DETAIL
SCALE: 1 1/2"=1'-0"

ADDENDUM 1

GRAPHIC SCALE SHOWN IN FULL SIZE
VERIFY SCALE FOR REDUCED PLANS

<p>APPROVED BY</p> <p>PROJECT ENGINEER 7-27-10 DATE</p>	<p>APPROVED BY</p> <p>DISTRICT ENGINEER 7-27-10 DATE</p>	<p>PROJECT TITLE</p> <p>LARKSPUR FERRY TERMINAL UTILITY REHABILITATION</p> <p>SHEET TITLE</p> <p>BILGE PUMP DETAILS</p> <p>DESIGNED CW/WWL CHECKED JDK DRAWN GLM SCALE AS-NOTED DATE 27JUL10</p>	<p>GOLDEN GATE BRIDGE HIGHWAY & TRANSPORTATION DISTRICT</p>								
<p>ADDENDUM 1</p> <table border="1"> <thead> <tr> <th>NO.</th> <th>REVISIONS</th> <th>BY</th> <th>DATE</th> </tr> </thead> <tbody> <tr> <td>1</td> <td></td> <td>WWL</td> <td>8/19/10</td> </tr> </tbody> </table> <p>CONTRACT NO. 2011-FI-3 DWG NO. 16 CADD FILE 11F03P016ADD1</p>		NO.	REVISIONS	BY	DATE	1		WWL	8/19/10		
NO.	REVISIONS	BY	DATE								
1		WWL	8/19/10								