



SAN RAFAEL TRANSPORTATION CENTER



Relocation Analysis, Environmental Clearance, and Preliminary Design

Oportunidades de Diseño del Centro de Tránsito Reunión Pública 10 de agosto de 2023



SAN RAFAEL TRANSPORTATION CENTER

Relocation Analysis, Environmental Clearance, and Preliminary Design



Agenda

- Welcome and Introductions
- Project Overview
- Design Principles
- Share Your Ideas
- Q&A



SAN RAFAEL TRANSPORTATION CENTER



Relocation Analysis, Environmental Clearance, and Preliminary Design

Welcome and Introductions



SAN RAFAEL TRANSPORTATION CENTER

Relocation Analysis, Environmental Clearance, and Preliminary Design



Photos of team members on the FB Live call



SAN RAFAEL TRANSPORTATION CENTER



Relocation Analysis, Environmental Clearance, and Preliminary Design

Project Background and History



SAN RAFAEL TRANSPORTATION CENTER

Relocation Analysis, Environmental Clearance, and Preliminary Design



Role of the Transit Center

- Over 800 daily bus trips
- 9,000 daily boardings and alightings
- Used as an access point to Downtown San Rafael and as a transfer point between services

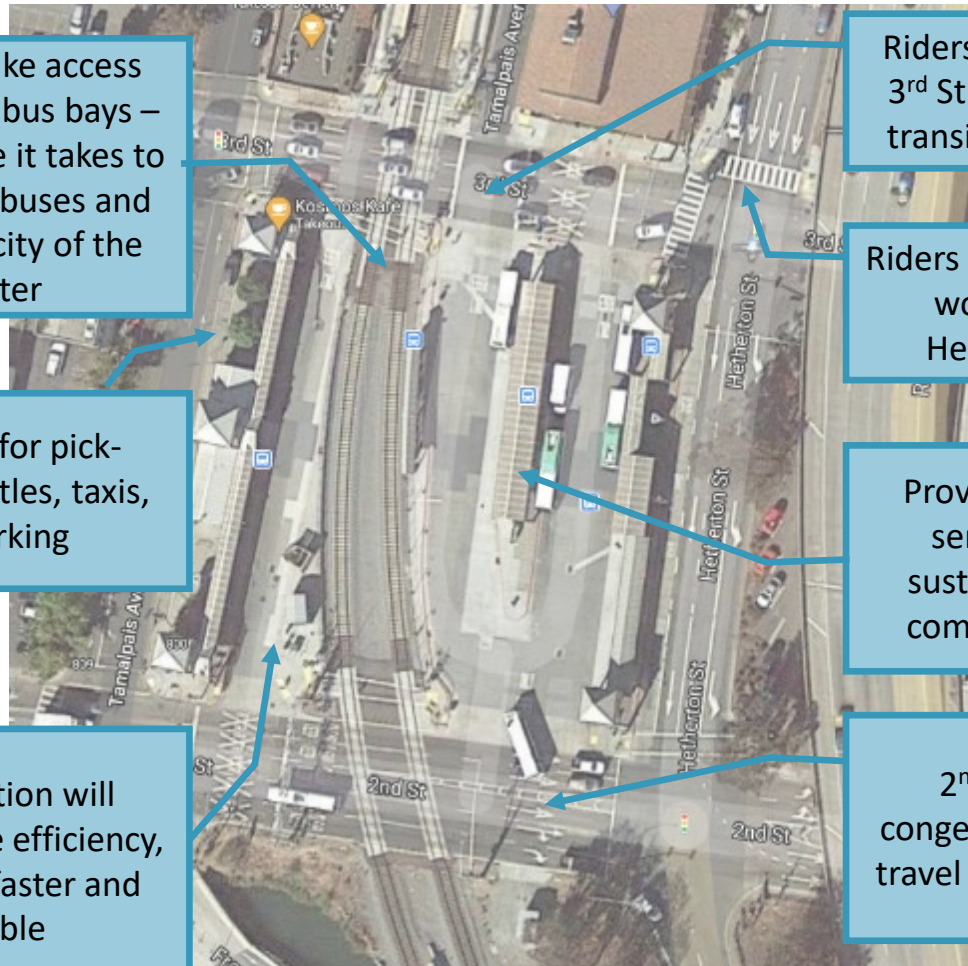




New transit center (red) to replace existing transit center (blue)



Areas for Improvement from Current Transit Center



SMART tracks make access difficult to several bus bays – increasing the time it takes to transfer between buses and limiting the capacity of the transit center

Increase space for pick-up/drop-off, shuttles, taxis, and bike parking

New configuration will improve bus route efficiency, making the bus faster and more reliable

Riders won't have to cross 3rd St. to get between the transit center and SMART

Riders walking from the east won't have to cross Heatherton at 3rd St.

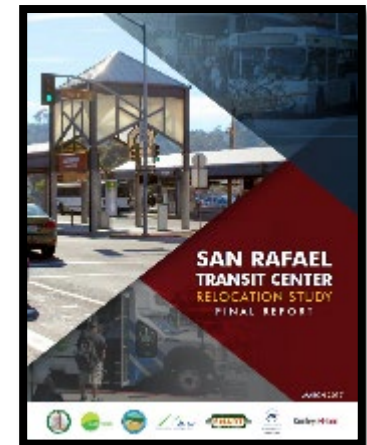
Provide more customer service, technology, sustainability, and user comfort improvements

2nd Street is often congested, impacting bus travel times and reliability



Project History

- 2010-2017: Planning and Studies
- 2018-2022: Environmental process
 - Evaluation of 5 alternatives, including No-Build Environmental Impact Report (required by the state)
 - Community engagement
 - Final approved Environmental Impact Report
- Preliminary design began Spring 2023





SAN RAFAEL TRANSPORTATION CENTER

Relocation Analysis, Environmental Clearance, and Preliminary Design



Adopted Alternative: Move Whistlestop



Legend

- Feature Tree
- Tree with Tree Well
- Tree
- Platform Seating
- Bus Canopy
- Landscaped Area
- Bike Racks
- Secure Bike Parking
- Security Kiosk
- Bike Path
- Canopy Overhead
- Ped Safety Barrier
- Ticket Machine
- Improved Paving
- Typical Paving





SAN RAFAEL TRANSPORTATION CENTER

Relocation Analysis, Environmental Clearance, and Preliminary Design

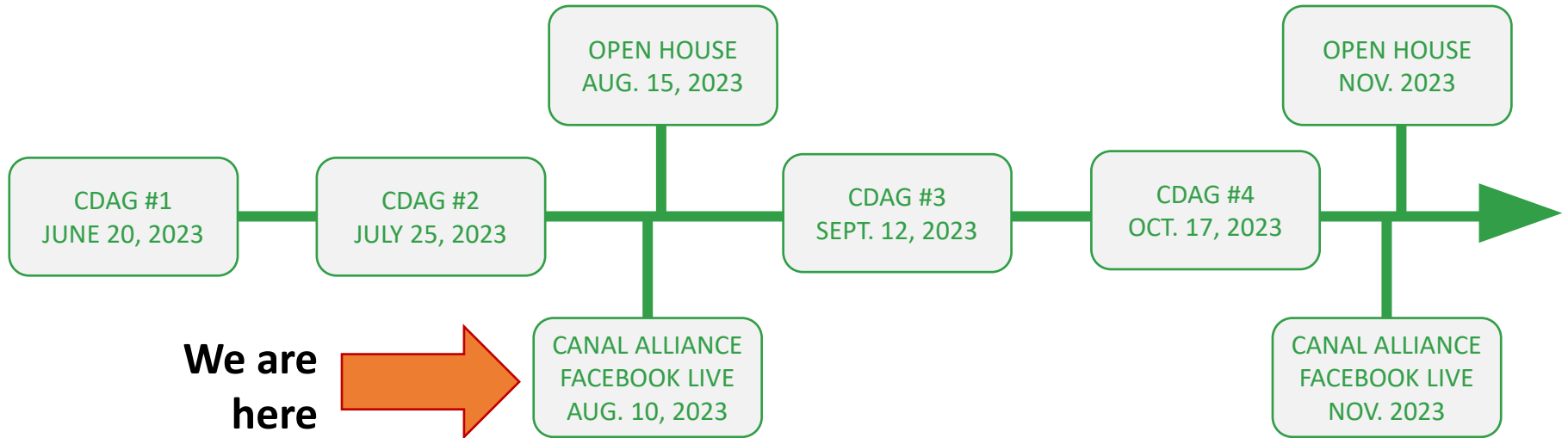


RECONNAISSANCE;
VISION +
PRINCIPLES

BIG MOVES

CONCEPT
DEVELOPMENT

IMPLEMENTATION;
REPORT-BACK





SAN RAFAEL TRANSPORTATION CENTER

Relocation Analysis, Environmental Clearance, and Preliminary Design





SAN RAFAEL TRANSPORTATION CENTER

Relocation Analysis, Environmental Clearance, and Preliminary Design



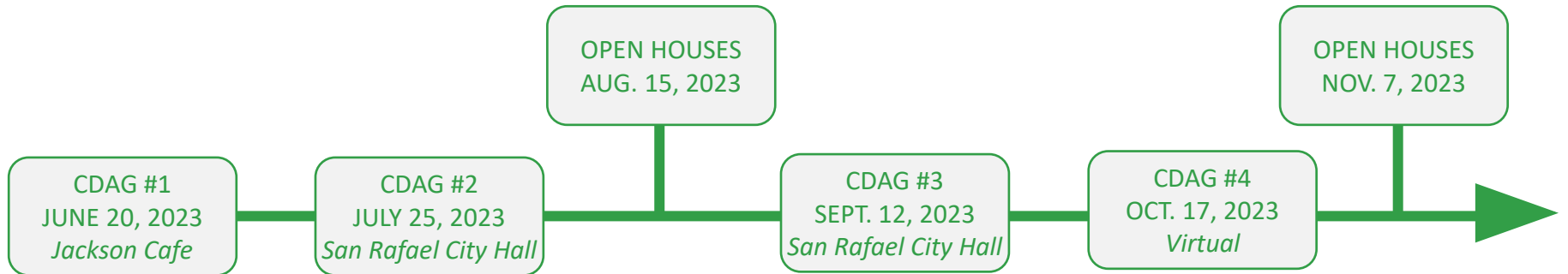
Timeline

RECONNAISSANCE;
VISION +
PRINCIPLES

BIG MOVES

CONCEPT
DEVELOPMENT

IMPLEMENTATION;
REPORT-BACK





Transit Center Features Planned to Include

- 17 bus bays
- Clipper machines
- Covered waiting areas and passenger seating
- Wayfinding
- Customer service and transit information
- Pick-up/drop-off space
- Taxi/TNC and shuttle space
- Public restrooms
- Security
- Existing SMART Station
- Bike parking
- Lighting
- Landscaping and public spaces
- Green (LEED) treatments
- Ancillary retail space
- Maintenance parking
- Driver relief facilities
- Consideration for Consideration for Crime Prevention Through Environmental Design (CPTED) strategies



SAN RAFAEL TRANSPORTATION CENTER



Relocation Analysis, Environmental Clearance, and Preliminary Design

Design Principles



SAN RAFAEL TRANSPORTATION CENTER

Relocation Analysis, Environmental Clearance, and Preliminary Design



**Consolidate
Transit Center**
Improve bike &
pedestrian safety



**Create gateway
to downtown
San Rafael**



**Retain sense
of historic rail
building**



**Sustainability and
Resilience**





SAN RAFAEL TRANSPORTATION CENTER

Relocation Analysis, Environmental Clearance, and Preliminary Design



**Consolidate
Transit Center**
Improve bike &
pedestrian safety



Some of what we've heard:

- Safe and easy pedestrian access from all directions
- Clear wayfinding signage
- Clear signage and barriers to keep people off train tracks
- Paving patterns to indicate priority to pedestrians
- Dedicated bike lane
- Support riders connecting between lines
- Solve safe pedestrian use of the Hetherton/Third intersection
- Create safe and pleasant pedestrian connections under freeway

What is important to you about pedestrian safety? Type a note in the chat



SAN RAFAEL TRANSPORTATION CENTER

Relocation Analysis, Environmental Clearance, and Preliminary Design



**Create gateway
to downtown
San Rafael**



Some of what we've heard:

- Transit center welcomes people to downtown
- Big trees
- Entry plaza with shade
- Use for music and events
- Places to relax, rest and socialize
- Information signage for downtown
- Transit services, cafes, other retail
- Interesting paving and public art
- Good lighting
- Lots of comfortable seating

What is important to you about a gateway plaza? Type a note in the chat



SAN RAFAEL TRANSPORTATION CENTER

Relocation Analysis, Environmental Clearance, and Preliminary Design



**Retain sense
of historic rail
building**



Some of what we've heard:

- Reveal original station features (1929)
- The building has changed a lot over time, including during the time it was owned by the railroad, so it can be hard to decide which features to keep
- New architecture should complement but be distinct from the historic building
- Incorporate art, signage and displays that reflect the history and culture of San Rafael more broadly (not just the Whistlestop building)

What is important to you about the historic rail building? Type a note in the chat



SAN RAFAEL TRANSPORTATION CENTER

Relocation Analysis, Environmental Clearance, and Preliminary Design



Sustainability and Resilience



Some of what we've heard:

- Use local and sustainable materials
- Use native plants
- Rainwater management
- Plan for periodic flooding from sea level rise
- The project should incorporate sustainability, but it does not need to be a “billboard” for sustainability

What is important to you about sustainability and resilience? Type a note in the chat



SAN RAFAEL TRANSPORTATION CENTER

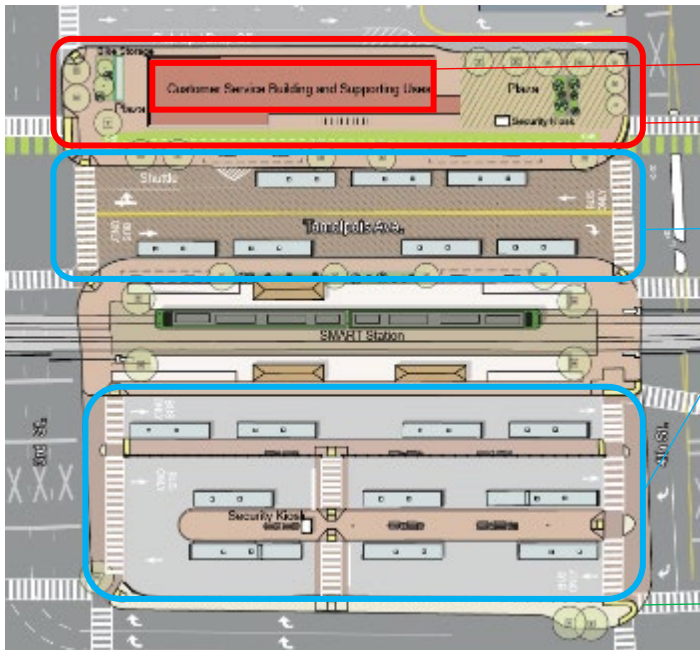


Relocation Analysis, Environmental Clearance, and Preliminary Design

Share Your Ideas and Opportunities



Primary Areas for Design Opportunities



Customer service building

Transit plaza

Bus shelters

Streetscape improvements
(throughout the site)



Plaza Function

- Which of the following plaza uses are the most important for you?
 1. Just to pass through
 2. Access transit information
 3. Sit and relax
 4. Eat at picnic tables or tables/chairs
 5. Bike parking
 6. I wouldn't use the plaza

Type your answers in the chat





Plaza Function

- How are you most likely to use the plaza when not waiting for the bus?
 1. Hang out with friends
 2. Coffee shop
 3. Other shopping or restaurant
 4. Community events
 5. Music events
 6. All of the above
 7. I wouldn't use the plaza

Type your answers in the chat





Landscape Character

Type your answers in the chat

- How much greenery (landscape) should the plaza have? How much paving (hardscape)?



1

Mostly
plants

2

Mostly plants +
some paving

3

Even mix of
plants and
paving

4

Mostly paving +
some plants

5

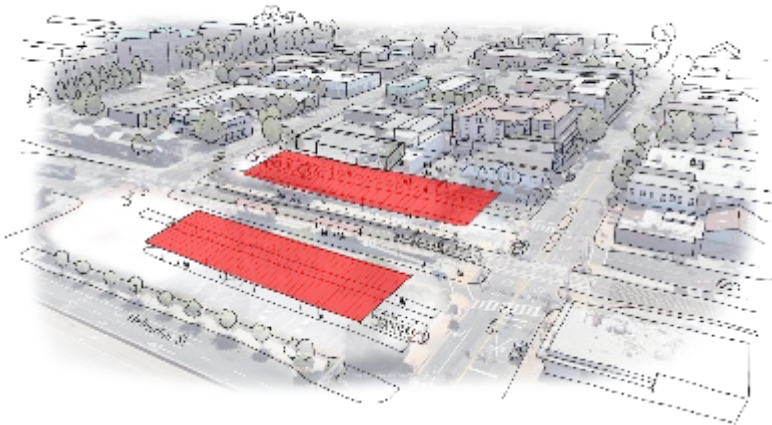
Mostly
paving



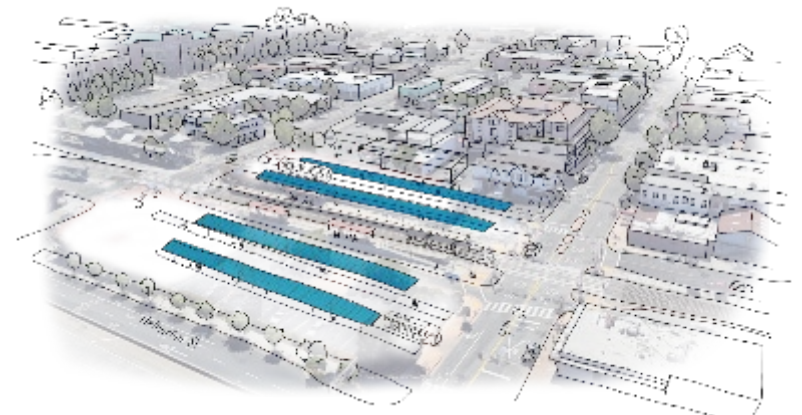
Bus Shelter Size

Type your answers in the chat

- What benefits or challenges of these two styles of bus shelters are important to you?



1. Large shelters that cover the road



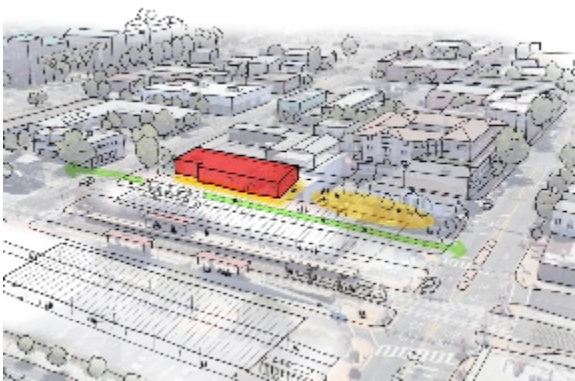
2. Long, narrow shelters that cover the pedestrian area



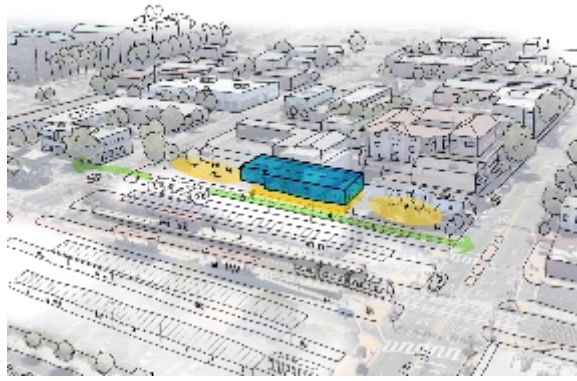
Plaza Location

Type your answers in the chat

- What benefits do you see of these different plaza locations?



1. Plaza near 4th St. /
building near 3rd St.



2. Plazas divided between
3rd St. and 4th St. /
building in the middle



3. Plaza near 3rd St. /
building near 4th St.



SAN RAFAEL TRANSPORTATION CENTER



Relocation Analysis, Environmental Clearance, and Preliminary Design

Q&A



SAN RAFAEL TRANSPORTATION CENTER

Relocation Analysis, Environmental Clearance, and Preliminary Design



In-Person Public Open House



Tuesday, August 15
5:30-7:30 pm

San Rafael
Community Center
618 B St, San Rafael