



SAN RAFAEL TRANSPORTATION CENTER

Preliminary Design Fact Sheet



August 2023

PROJECT INFORMATION

The San Rafael Transit Center is a critical transportation hub for Marin County, serving 9,000 daily boardings and alightings, connecting a variety of local, regional, commuter, and airport transit services. It serves both as a gateway to downtown San Rafael and a key node in the mobility of thousands of essential and transit-dependent workers. The Golden Gate Bridge, Highway and Transportation District (District), in coordination with the City of San Rafael, Marin Transit, the Transportation Authority of Marin (TAM), and Sonoma-Marín Area Rail Transit (SMART), is working on a project to replace the existing transit center with a new facility.



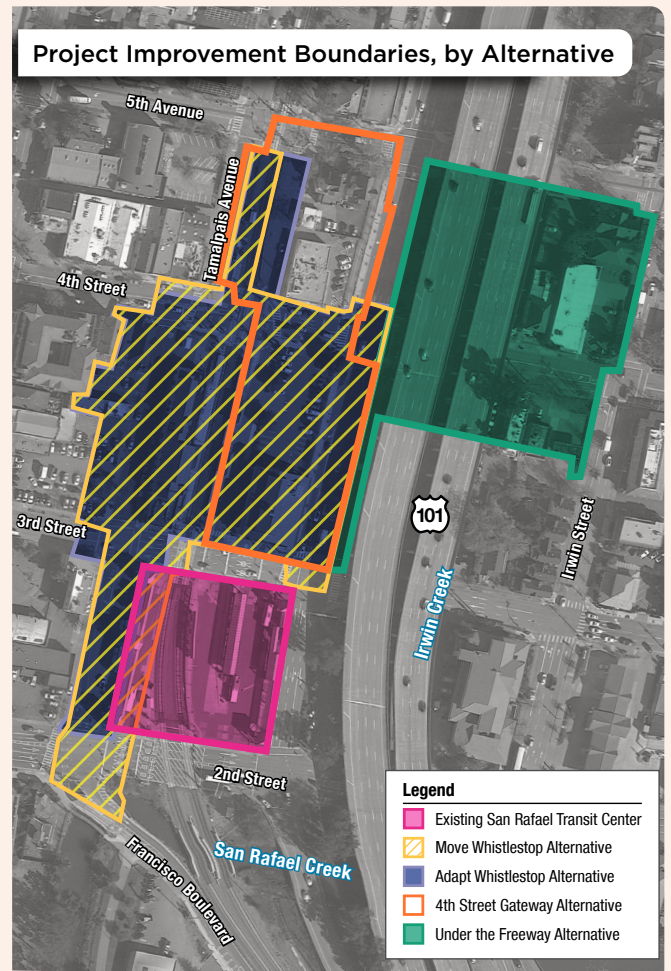
ENVIRONMENTAL ANALYSIS FINDINGS

The environmental analysis phase builds upon previous planning and outreach efforts. At the outset of the project, a wide variety of site location options were considered, from which four build alternatives were advanced for environmental impact analysis. These alternatives were analyzed for potential environmental impacts associated with the project. A Draft EIR was conducted in accordance with State California Environmental Quality Act (CEQA) Guidelines. The scoping process for this EIR was formally initiated on October 16, 2018, with the release of the Notice of Preparation.

The Draft EIR included an examination of the following resource areas:

- » Aesthetics
- » Air quality
- » Biological resources
- » Cultural resources
- » Energy
- » Geology and soils
- » Greenhouse gas emissions
- » Hazards and hazardous materials
- » Hydrology and water quality
- » Land use and planning
- » Noise and vibration
- » Population and housing
- » Recreation and public services
- » Transportation
- » Tribal cultural resources
- » Utilities and service systems
- » Wildfire
- » Cumulative impacts
- » Alternatives to the proposed project
- » Significant unavoidable impacts
- » Significant irreversible changes in the environment
- » Growth inducement

The Move Whistlestop Alternative was identified as the preferred alternative in the Draft Environmental Impact Report (Draft EIR). Analysis indicated that the Move Whistlestop Alternative would not result in unavoidable significant impacts. Significant impacts related to Air Quality, Biological Resources, Cultural Resources, Energy, Greenhouse Gas Emissions, Hazards and Hazardous Materials, Hydrology and Water Quality, Noise and Vibration, and Tribal Cultural Resources will be reduced to less-than-significant levels after mitigation measures are implemented. The Final Environmental Impact Report (FEIR) was released in October 2022. Comments provided at the public meetings were recorded and responded to in the FEIR.





SAN RAFAEL TRANSPORTATION CENTER

Preliminary Design Fact Sheet

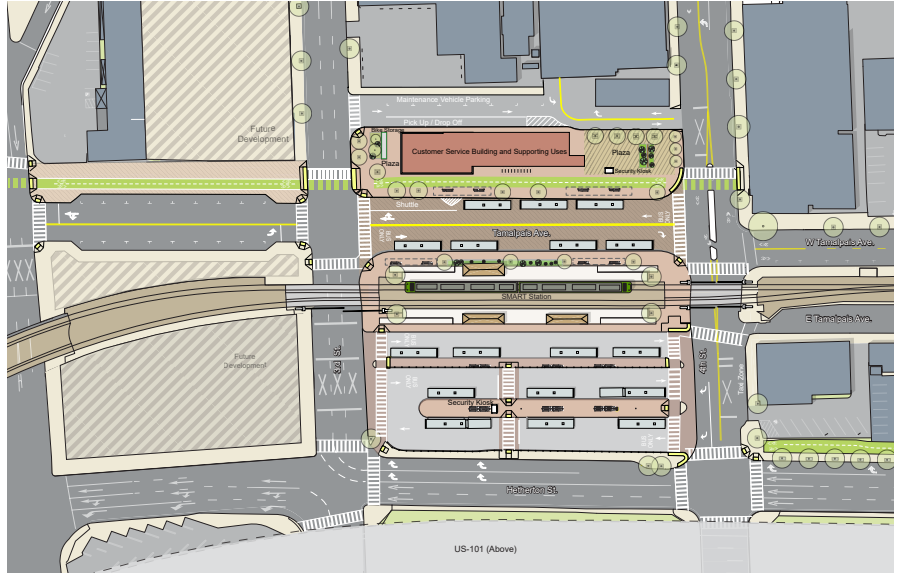


August 2023

MOVE WHISTLESTOP ALTERNATIVE

The Move Whistlestop Alternative had the least number of impacts to existing residents and businesses and will include:

- Bus bays and existing SMART rail station
- Curb space for shuttles, pick-up/drop-offs, and taxis
- Customer service building, including restrooms and operations and security facilities
- Covered waiting areas and passenger seating
- Transit-supportive retail space and public plazas
- Landscaping
- Improved sidewalks and crosswalks
- New high quality bicycle connection along Tamalpais Avenue, between 2nd Street and 4th Street.
- Bike parking
- Clipper machines
- Wayfinding signage and transit information
- Security and lighting
- Maintenance parking
- Green (LEED) treatments
- Consideration for Consideration for Crime Prevention Through Environmental Design (CPTED) strategies



PROJECT BENEFITS

The Project will provide many benefits, including:

- ✓ Improved pedestrian and bicycle access to transit
- ✓ Improvements in bus travel time and reliability
- ✓ Improved mobility options and reductions in transit operating costs
- ✓ Improved traffic flow by reducing bus circulation on local streets
- ✓ Additional flexibility for potential future expansion of bus service
- ✓ New LEED-certified transit center facilities
- ✓ New public spaces that will enhance the sense of place for downtown San Rafael
- ✓ Elimination of street crossings for bus and SMART transfers
- ✓ Improved wayfinding and a more cohesive transit identity
- ✓ Implements key parts of the City's Station Area Plan and Bicycle and Pedestrian Master Plan

PROJECT SCHEDULE

